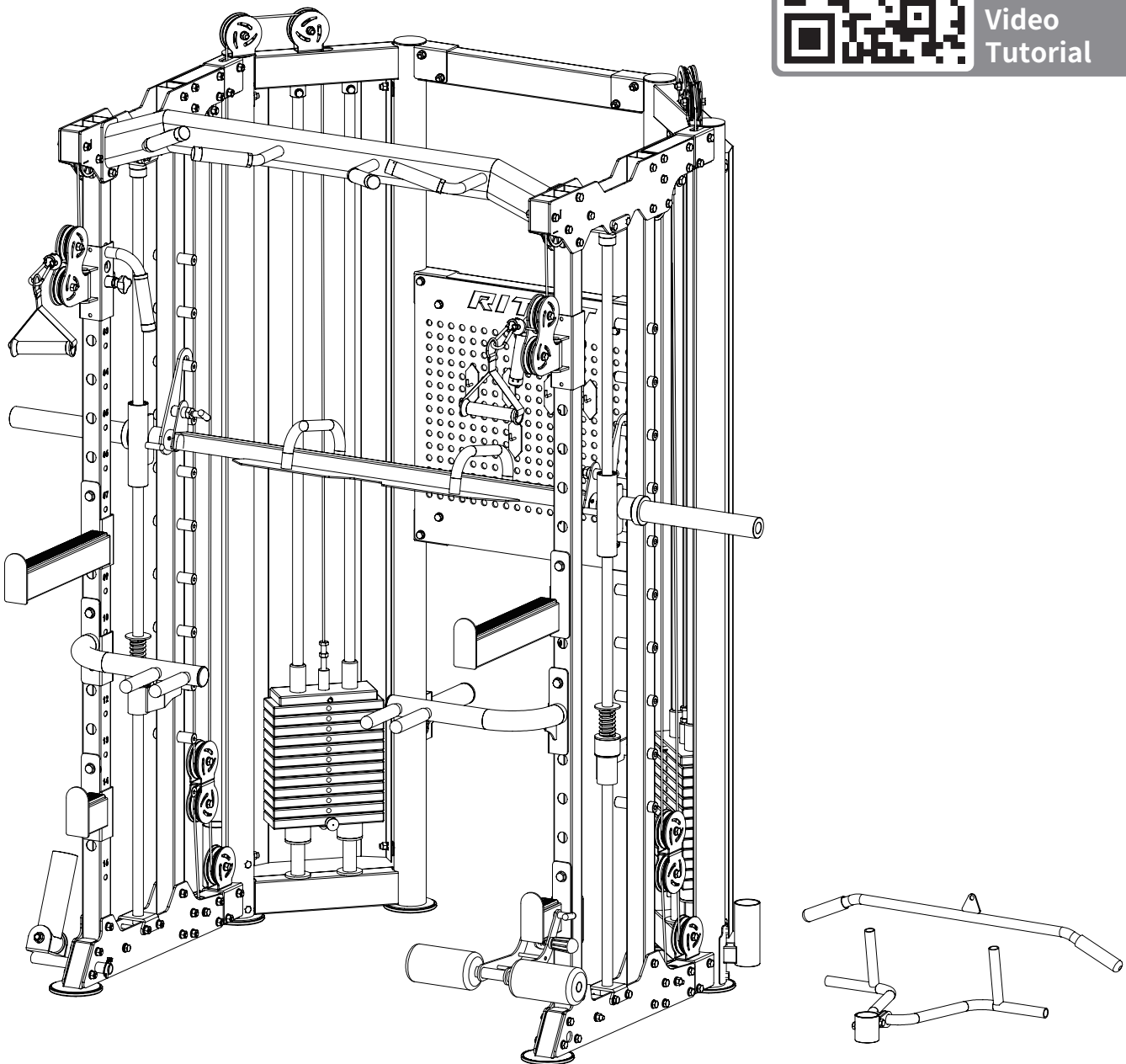


RITFIT

MULTIFUNCTIONAL POWER CAGE BPC06



BPC06
Installation
Guide
Video
Tutorial



OWNER'S MANUAL & ASSEMBLY INSTRUCTIONS

SAFETY & PRECAUTIONS

IMPORTANT: READ ALL PRECAUTIONS CAREFULLY BEFORE USING THIS PRODUCT. RETAIN OWNER'S MANUAL FOR FUTURE REFERENCE.

- In the event should you find this product has either a defective or a missing part, do not use substitute parts or try to use the unit in an incomplete form. Please contact RITFIT for a replacement.
- Additional features on products may be added during seasonal production but may not be featured in line art diagrams at time of production. Changes of such will not affect the performance or assembly of the unit. If you would like further clarification during your assembly process please feel free to contact RITFIT for direction.
- This product has been designed for light commercial or home use only. Light commercial can be defined as a location with multiple users but not in a membership setting. Examples would be hotels, fire departments, high schools, etc. Commercial use would include, but not limited to, locations that accept membership for use of equipment.
- This exercise equipment was designed and built for optimum safety. However certain operator precautions apply whenever you operate a piece of exercise equipment. Please note the following safety procedures:
 1. Keep children and pets away from this equipment.
 2. Always inspect equipment prior to use to assure the structural integrity. Some parts may need occasional maintenance due to wear and tear.
 3. Lubricate moving parts as needed (depends on use but once a month is a good rule to follow).
 4. One person at a time should use this equipment unless otherwise designed for safety (example: spotter stand on some weight benches).
 5. If dizziness, nausea, chest pains, or any other abnormal symptoms are experienced while using this equipment, stop the workout at once. **CONSULT A PHYSICIAN IMMEDIATELY.**
 6. Always use this equipment on a level surface. Do not use outdoors or near water.
 7. Keep hands and feet away from any moving parts that are not intended to have body parts near them while in use.
 8. Do not insert any object into any openings unless object is supposed to be inserted into a particular place (such as a pin in a weight stack).
 9. Before using this equipment, always do stretching exercise to warm up.
 10. Use this equipment only for its intended use as described in manual.
 11. Always wear appropriate workout clothing and shoes when exercising. **DO NOT WEAR ROBES OR OTHER CLOTHING THAT COULD BECOME CAUGHT IN THE EQUIPMENT.**
 12. **BEFORE BEGINNING ANY EXERCISE PROGRAM, CONSULT YOUR PHYSICIAN.**
 13. If you have any question, please e-mail our customer service team at support@ritfitsports.com.

CARE AND MAINTENANCE

- Inspect and tighten all parts before using the equipment.
- The equipment can be cleaned using a damp cloth and mild non-abrasive detergent. **DO NOT** use solvents.
- Examine the equipment regularly for signs of damages or wear.
- Replace any defective components immediately and/or keep the equipment out of use until repair.
- Failure to examine regularly may affect the safety level of the equipment.

Power Cage Warranty

A. What's Covered Under RitFit LLC's Basic Warranty?

Basic Warranty.

B. Who Is Covered?

You are covered by the Basic Warranty if you are a purchaser for use of the RitFit Power Cage.

C. What's Covered?

The Basic Warranty covers the cost of all parts and labor needed to repair any item on your power cage when it left the manufacturing plant that is defective in material, workmanship or factory preparation. These warranty repairs or adjustments will be made by RitFit at no charge, using new or remanufactured parts.

D. When It Begins?

The Basic Warranty begins on the day of order.

E. When It Ends?

The Basic Warranty lasts for 60 months from the date it begins, but the following items are covered only for 24 months: bolts; nuts; washers; tube bushings; foot covers; pulley sleeve; pulleys; chains; gourd buckles; cables; top beam; J-hooks; plate carriage; pulley brace; plate storage pegs.

F. What's Not Covered?

Please note that while the standard Basic Warranty applies to defects in material and/or workmanship, it does not cover the power cage's matte finish appearance. Maintaining the matte finish appearance is solely the responsibility of the owner. Basic Warranty doesn't cover damage caused by environmental factors such as airborne fallout, insect damage, chemicals, salt, and ocean spray. Nor do your warranty cover damage caused by hailstorms, windstorms, tornadoes, sandstorms, lightning, floods, and earthquakes. Your warranty does not cover conditions resulting from anything impacting the multifunctional power cage.

G. How To Contact Us?

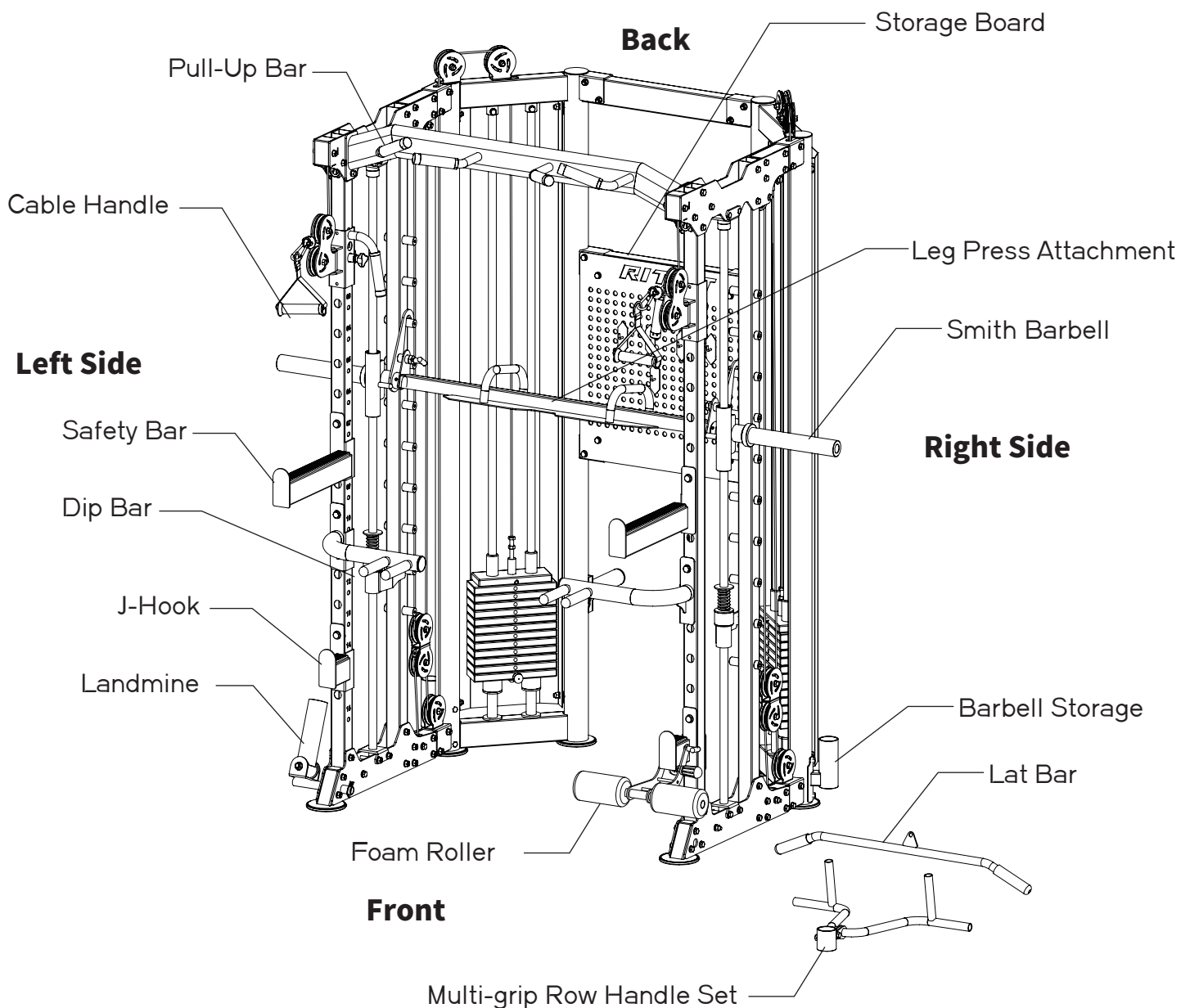
To ensure you receive the best technical support, please visit our website: www.ritfitsports.com and register your warranty. Customers with registered warranties are given a profile that allows for easier support and for us to contact you with important product notifications. If any parts are missing, worn, damaged or broken before the assembly, or you ever need to replace the parts, please contact us at support@ritfitsports.com.

BEFORE YOU BEGIN

Thank you for selecting the versatile RITFIT® Multifunctional Power Cage. RITFIT® Multifunctional Power Cage is designed to be used with weight training system and the pulley system as well as your body weight to help you develop every major muscle group of the body.

For your benefit, read this manual carefully before using the Multifunctional Power Cage. If you have additional questions, please email our Customer Service Department at support@ritfitsports.com. To help us assist you, please note the product model number and serial number before calling. The model number is BPC06.

BEFORE READING FURTHER, PLEASE REVIEW THE DRAWING BELOW AND FAMILIARIZE YOURSELF WITH THE PARTS THAT ARE LABELED.

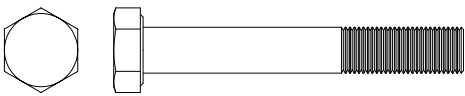


CAPACITY:2000LB

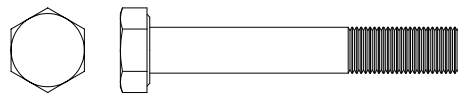
PARTS LIST

FASTENER AND TOOLS

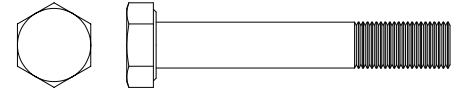
NO.	DESCRIPTION	QUANTITY
a	M10x90 Hex Bolt	4
b	M10x85 Hex Bolt	8
c	M10x80 Hex Bolt	6
d	M10x75 Hex Bolt	51
e	M10x45 Hex Bolt	14
f	M10x25 Hex Bolt	4
g	M8x45 Hex Bolt	4
h	M8x20 Hex Bolt	8
i	M8 Washer	24
j	M8 Nut	12
k	M10 Washer	172
l	M10 Nut	85



(a) M10x90 Hex Bolt
4x



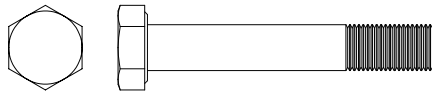
(b) M10x85 Hex Bolt
8x



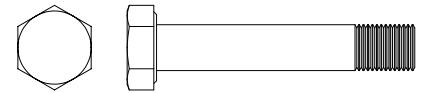
(c) M10x80 Hex Bolt
6x



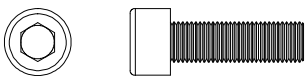
(d) M10x75 Hex Bolt
51x



(e) M10x45 Hex Bolt
14x



(f) M10x25 Hex Bolt
4x



(g) M8x45 Hex Bolt
4x



(h) M8x20 Hex Bolt
8x



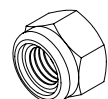
(i) M8 Washer
24x



(j) M8 Nut
12x



(k) M10 Washer
172x

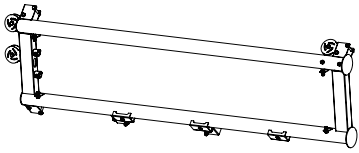


(l) M10 Nut
85x

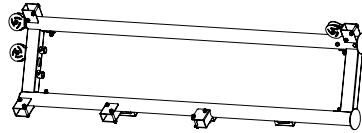
PARTS LIST

·PACKED IN THE BOX

NO.	DESCRIPTION	QUANTITY
1	Back Upright Frame (Left)	1
2	Back Upright Frame (Right)	1
3	Back Beam	3
4-1	Top Bracket	4
4-2	Top Bracket Short Tube	2
4-3	Bracket-Frame Connector	2
5-1	Bottom Bracket	4
5-2	Bottom Bracket Short Tube	2
5-3	Foot Cap	2
6	Smith Positioning Upright Frame	2
7	Slider Upright Frame (Left)	1
8	Slider Upright Frame (Right)	1



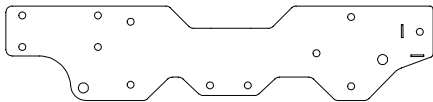
① Back Upright Frame (Left)
1x



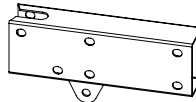
② Back Upright Frame (Right)
1x



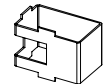
③ Back Beam
3x



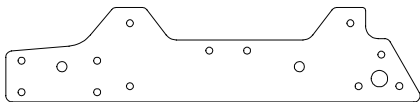
④-1 Top Bracket
4x



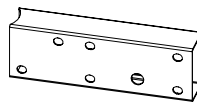
④-2 Top Bracket Short Tube
2x



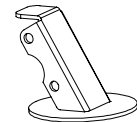
④-3 Bracket-Frame Connector
2x



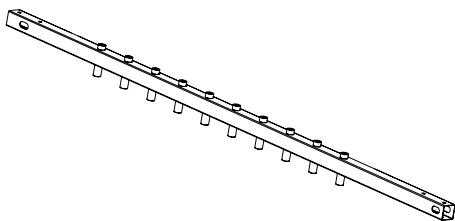
⑤-1 Bottom Bracket
4x



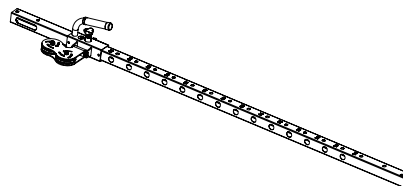
⑤-2 Bottom Bracket Short Tube
2x



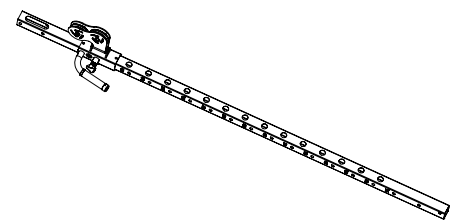
⑤-3 Foot Cap
2x



⑥ Smith Positioning Upright Frame
2x



⑦ Slider Upright Frame (Left)
1x

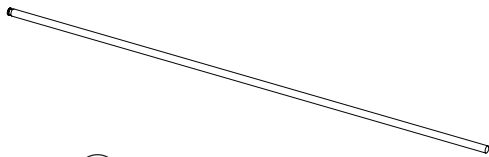


⑧ Slider Upright Frame (Right)
1x

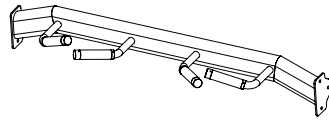
PARTS LIST

•PACKED IN THE BOX

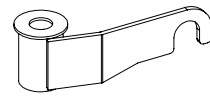
NO.	DESCRIPTION	QUANTITY
9	Solid Barbell Guiding Rod	2
10	Pull-up Bar	1
11	Barbell Safety Support Hook (Left)	1
12	Barbell Safety Support Hook (Right)	1
13	Barbell Guiding Rod Bottom Seat	2
14	Barbell Positioning Tube	2
15	Spring Washer	4
16	Solid Barbell Guiding Rod Bottom Pad	2
17	Barbell Guiding Rod Top Seat	2
18	Spring	2
19	Smith Barbell	1
20	Barbell Positioning Hook (Left)	1



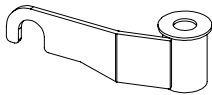
⑨ Solid Barbell Guiding Rod
2x



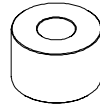
⑩ Pull-up Bar
1x



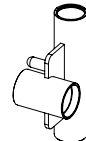
⑪ Barbell Safety Support Hook (Left)
1x



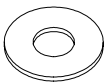
⑫ Barbell Safety Support Hook (Right)
1x



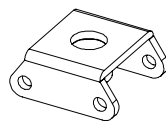
⑬ Barbell Guiding Rod Bottom Seat
2x



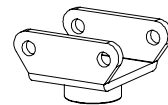
⑭ Barbell Positioning Tube
2x



⑮ Spring Washer
4x



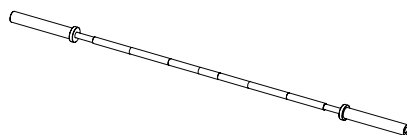
⑯ Solid Barbell Guiding Rod Bottom Pad
2x



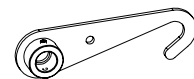
⑰ Barbell Guiding Rod Top Seat
2x



⑱ Spring
2x



⑲ Smith Barbell
1x

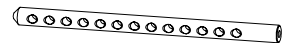
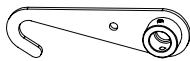


⑳ Barbell Positioning Hook (Left)
1x

PARTS LIST

•PACKED IN THE BOX

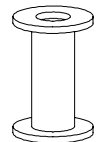
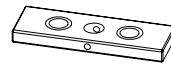
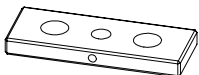
NO.	DESCRIPTION	QUANTITY
21	Barbell Positioning Hook (Right)	1
22	Solid Barbell Guiding Rod Top Cup	2
23	Hoist	2
24-1	Top Weight Stack	2
24-2	Weight Stack Plastic Sleeve	4
25	Weight Stack	24
26	Support Tube	4
27	Rubber Bumper	4
28	Weight Stack Pin	2
29	Double Pulley Cover	2
30	Pulley A	18
31	Pulley B	4
32	Storage Hook	6
33	Hollow Pulley System Guiding Rod	4
34	Weight Stack Cover	2



②1 Barbell Positioning Hook (Right)
1x

②2 Solid Barbell Guiding Rod Top Cup
2x

②3 Hoist
2x

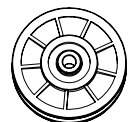
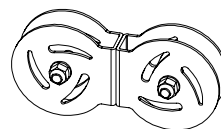


②4-1 Top Weight Stack
2x

②4-2 Weight Stack Plastic Sleeve
4x

②5 Weight Stack
24x

②6 Support Tube
4x

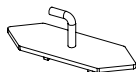
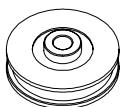


②7 Rubber Bumper
4x

②8 Weight Stack Pin
2x

②9 Double Pulley Cover
2x

③0 Pulley A
18x



③1 Pulley B
4x

③2 Storage Hook
6x

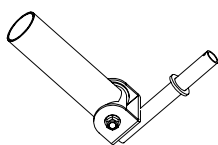
③3 Hollow Pulley System
Guiding Rod
4x

③4 Weight Stack Cover
2x

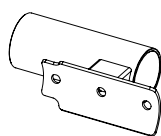
ASSEMBLY AND ADJUSTMENT

•PACKED IN THE BOX

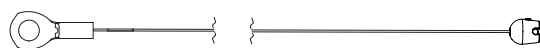
NO.	DESCRIPTION	QUANTITY
35	Landmine Attachment	1
36	Barbell Storage	2
37	Cable A	2
38	Storage Board	1
39	Plate Storage Tube	6
40	Cable B	2
41	Leg Press Attachment	1
42	Dip Bars Set	1
43	Safety Bars Set	1
44	J-Hook (Left)	1
45	J-Hook (Right)	1
46	Multi-grip Row Handle Set	1



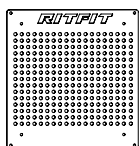
③⑤ Landmine Attachment
1x



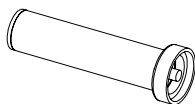
③⑥ Barbell Storage
2x



③⑦ Cable A
2x



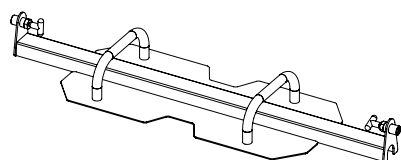
③⑧ Storage Board
1x



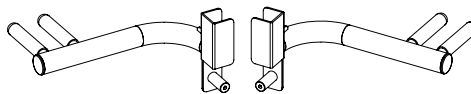
③⑨ Plate Storage Tube
6x



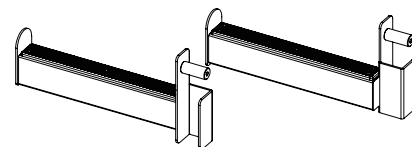
④⑩ Cable B
2x



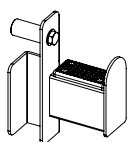
④① Leg Press Attachment
1x



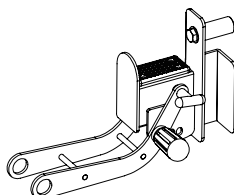
④② Dip Bars Set
1x



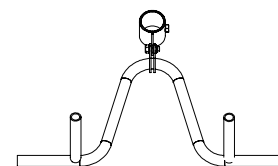
④③ Safety Bars Set
1x



④④ J-Hook (Left)
1x



④⑤ J-Hook (Right)
1x

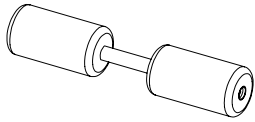


④⑥ Multi-grip Row Handle Set
1x

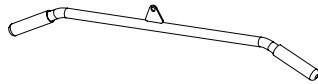
ASSEMBLY AND ADJUSTMENT

•PACKED IN THE BOX

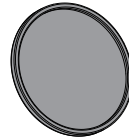
NO.	DESCRIPTION	QUANTITY
47	Foam Roller	1
48	Lat Bar	1
49	Foot Pad	6
50	Collar	2
51	Weight Stack Pin	2
52	Cable Handle	2
53	Carabiner	3
54	Silicone Oil	1
55	Allen Key	1
56	Open-ended Wrench 17-19	1
57	Ratchet Wrench	1
58	Pulley Peg	16



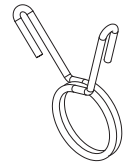
④⑦ Foam Roller
1x



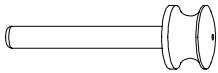
④⑧ Lat Bar
1x



④⑨ Foot Pad
6x

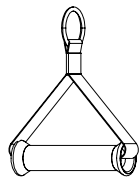


⑤⑩ Collar
2x



⑤① Weight Stack Pin
2x

(You can use it to adjust the number of Weight Stacks ②⑤)



⑤② Cable Handle
2x



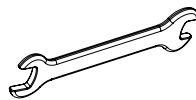
⑤③ Carabiner
3x



⑤④ Silicone Oil
1x



⑤⑤ Allen Key
1x



⑤⑥ Open-ended Wrench 17-19
1x



⑤⑦ Ratchet Wrench
1x

(Note: Use this Ratchet Wrench for quick and easy tightening or loosening fasteners! You can keep it as a souvenir from RitFit!)

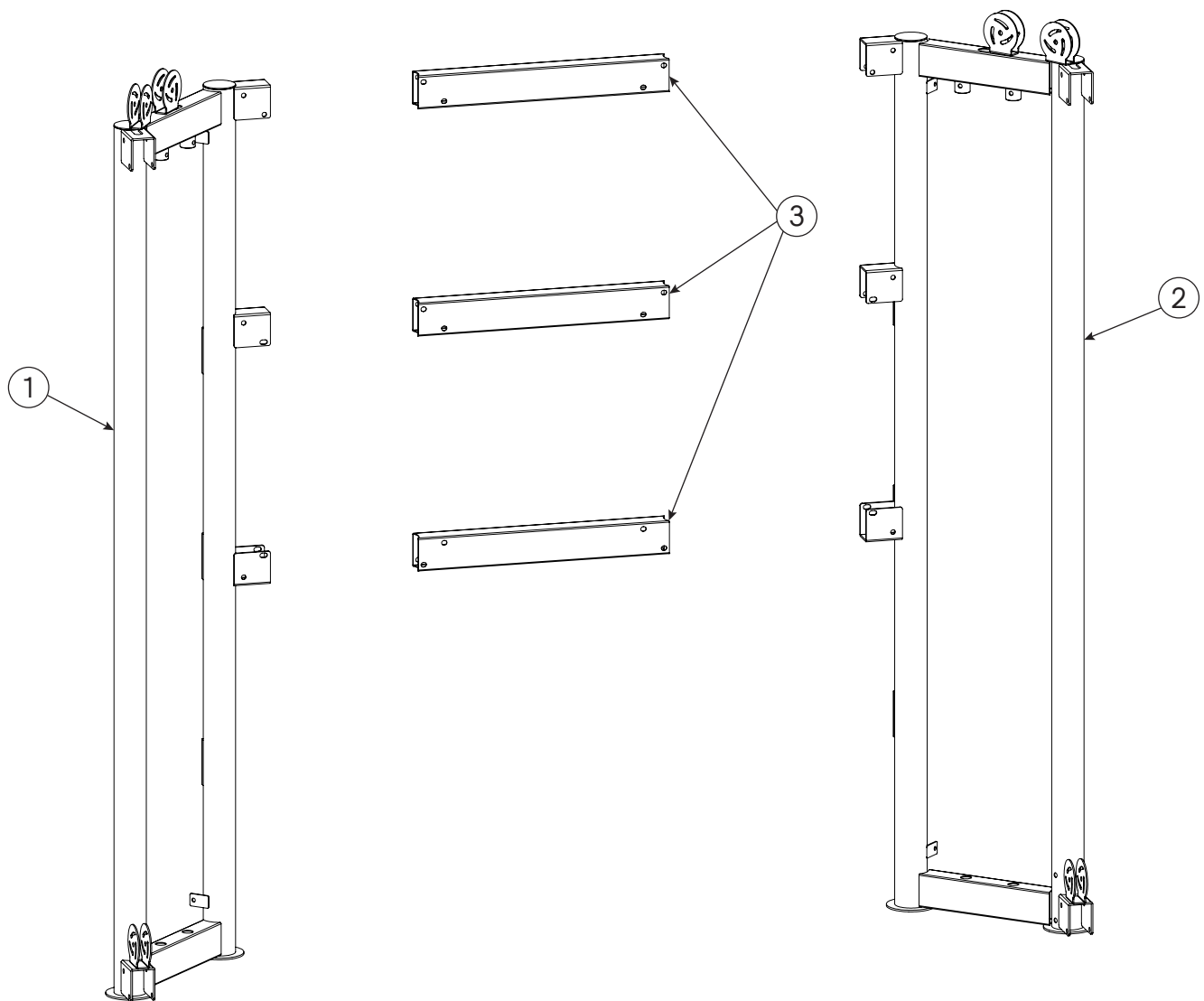


⑤⑧ Pulley Peg
16x

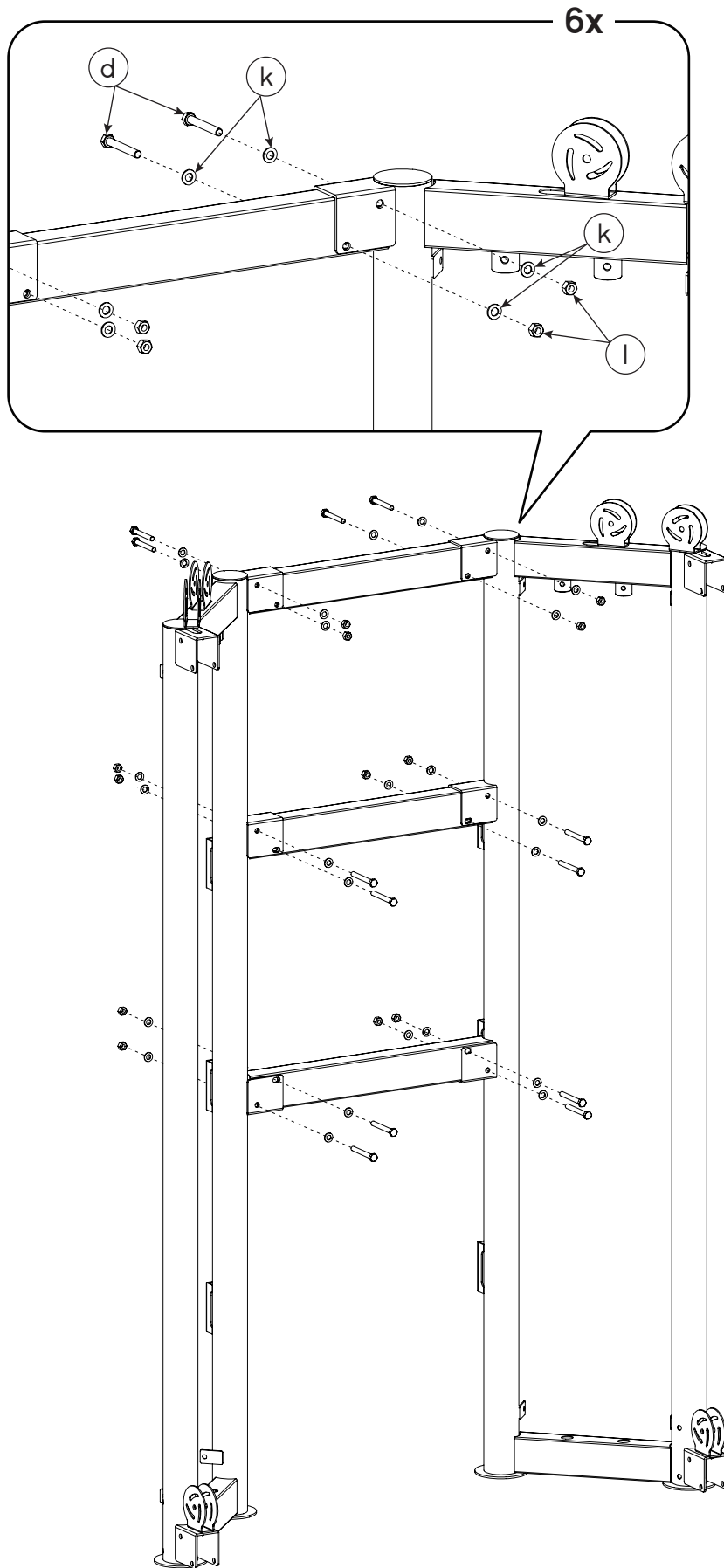
ASSEMBLY AND ADJUSTMENT

STEP 1-1 (Two People Are Required.)

NO.	DESCRIPTION	QUANTITY
1	Back Upright Frame (Left)	1
2	Back Upright Frame (Right)	1
3	Back Beam	3
d	M10x75 Hex Bolt	12
k	M10 Washer	24
l	M10 Nut	12



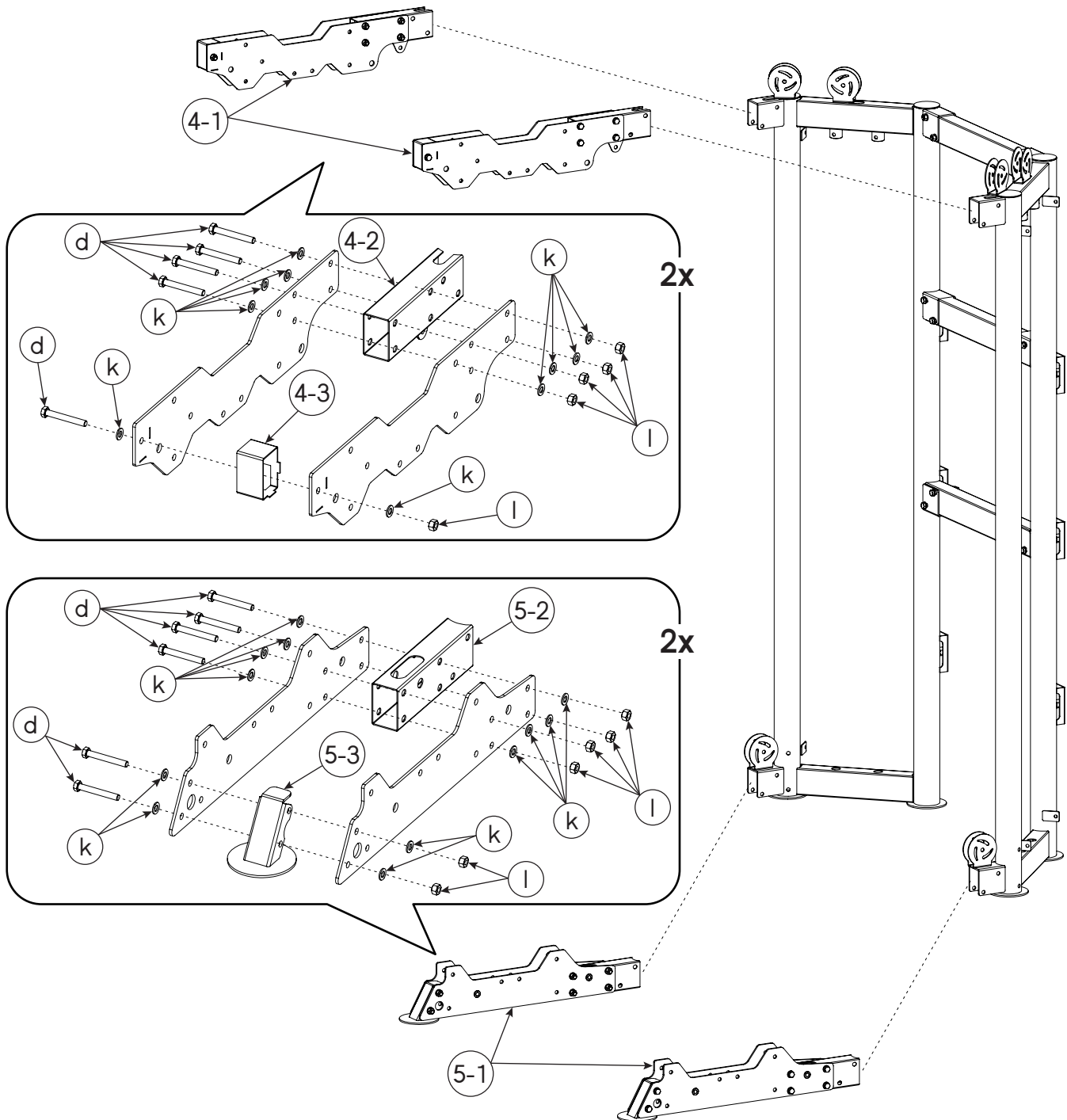
STEP 1-2 (Two People Are Required.)



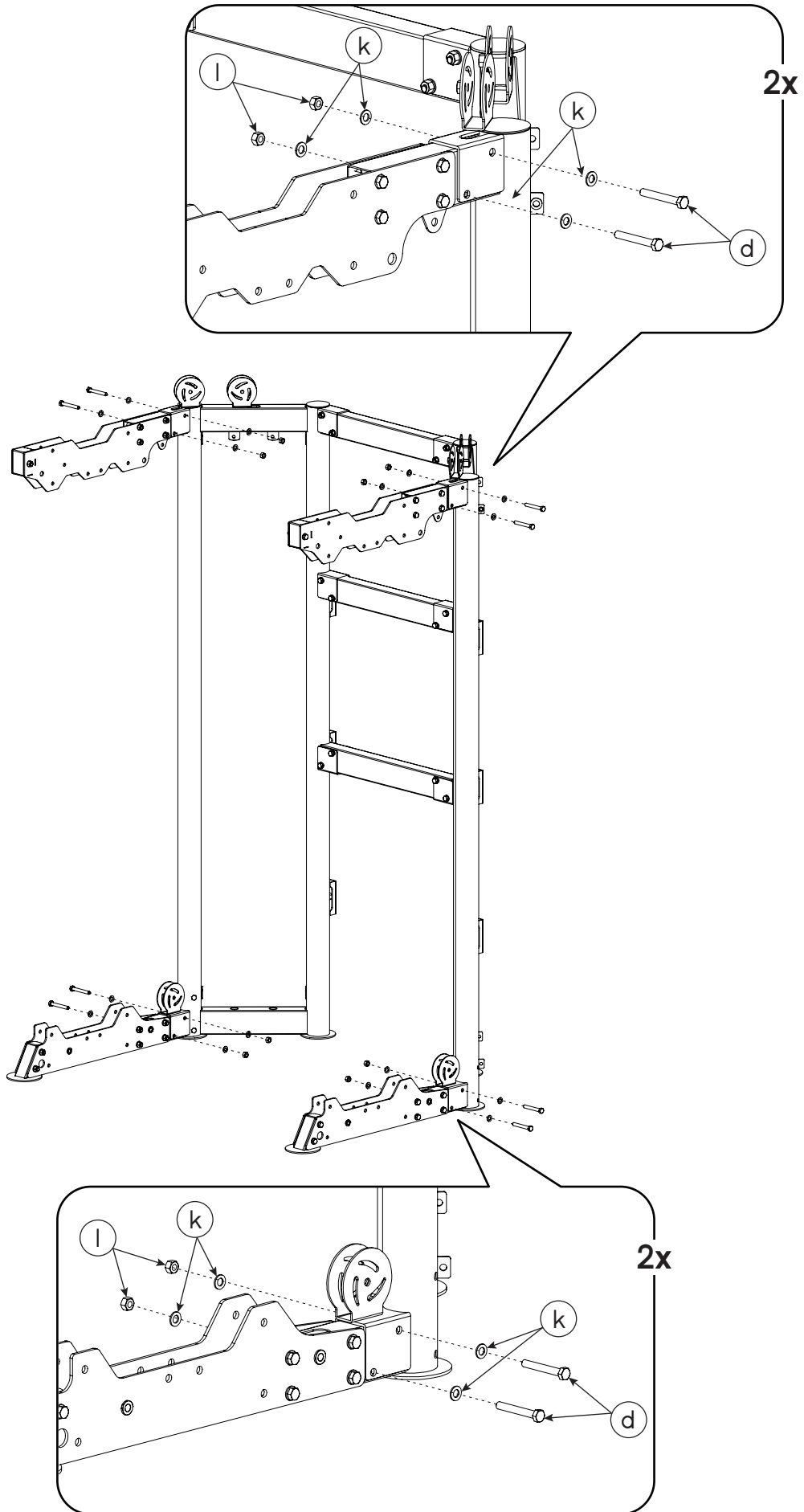
* NOTE: Don't tighten all the bolts until you finishing all the assembling steps of the main frame, otherwise the rack may be unbalanced or upwarp.

STEP 2-1 (Two People Are Required.)

NO.	DESCRIPTION	QUANTITY
4-1	Top Bracket	4
4-2	Top Bracket Short Tube	2
4-3	Bracket-Frame Connector	2
5-1	Bottom Bracket	4
5-2	Bottom Bracket Short Tube	2
5-3	Foot Cap	2
d	M10x75 Hex Bolt	19
k	M10 Washer	38
l	M10 Nut	19



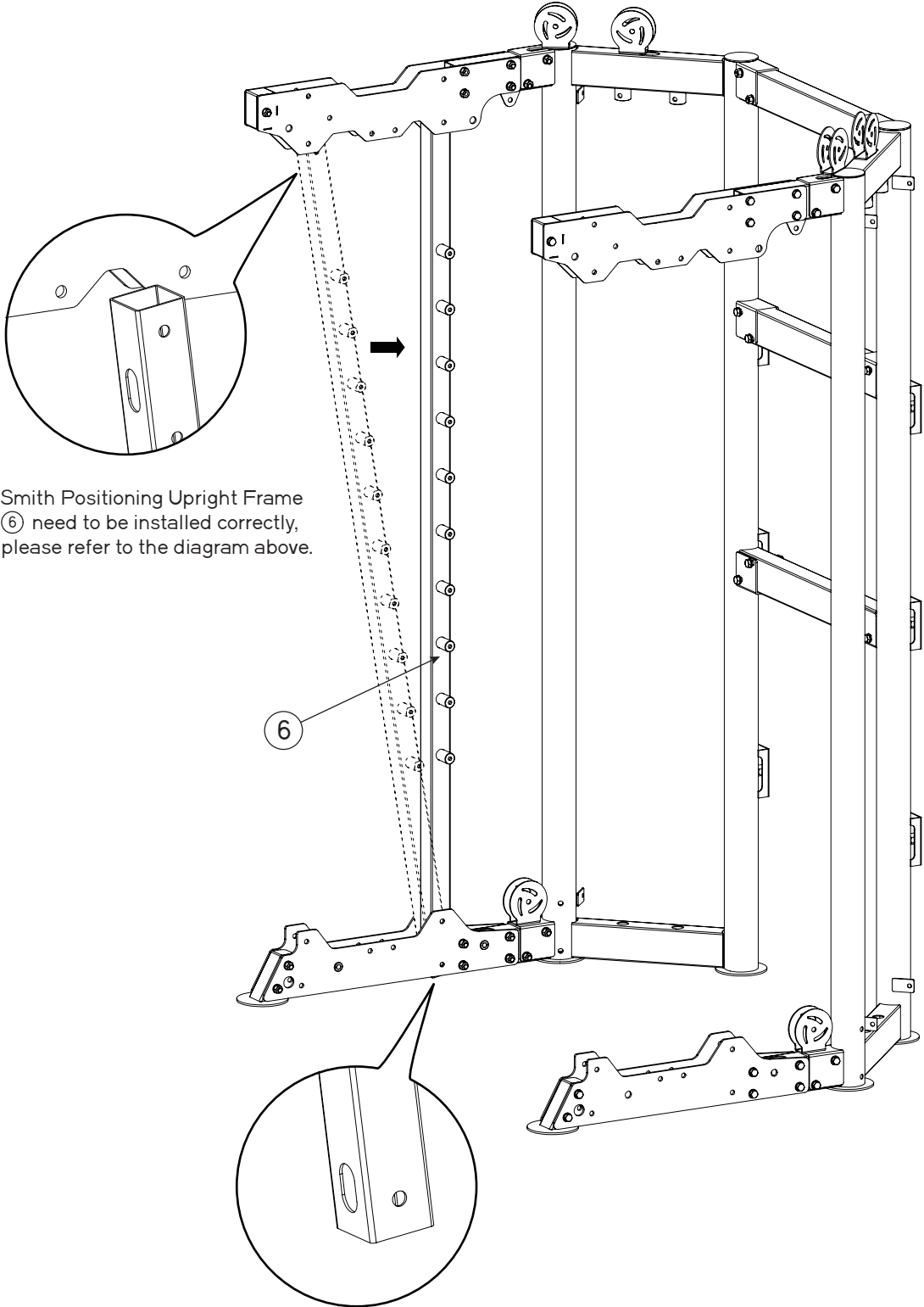
STEP 2-2 (Two People Are Required.)



* NOTE: Don't tighten all the bolts until you finishing all the assembling steps of the main frame, otherwise the rack may be unbalanced or upwarp.

STEP 3 (Two People Are Required.)

NO.	DESCRIPTION	QUANTITY
6	Smith Positioning Upright Frame	1

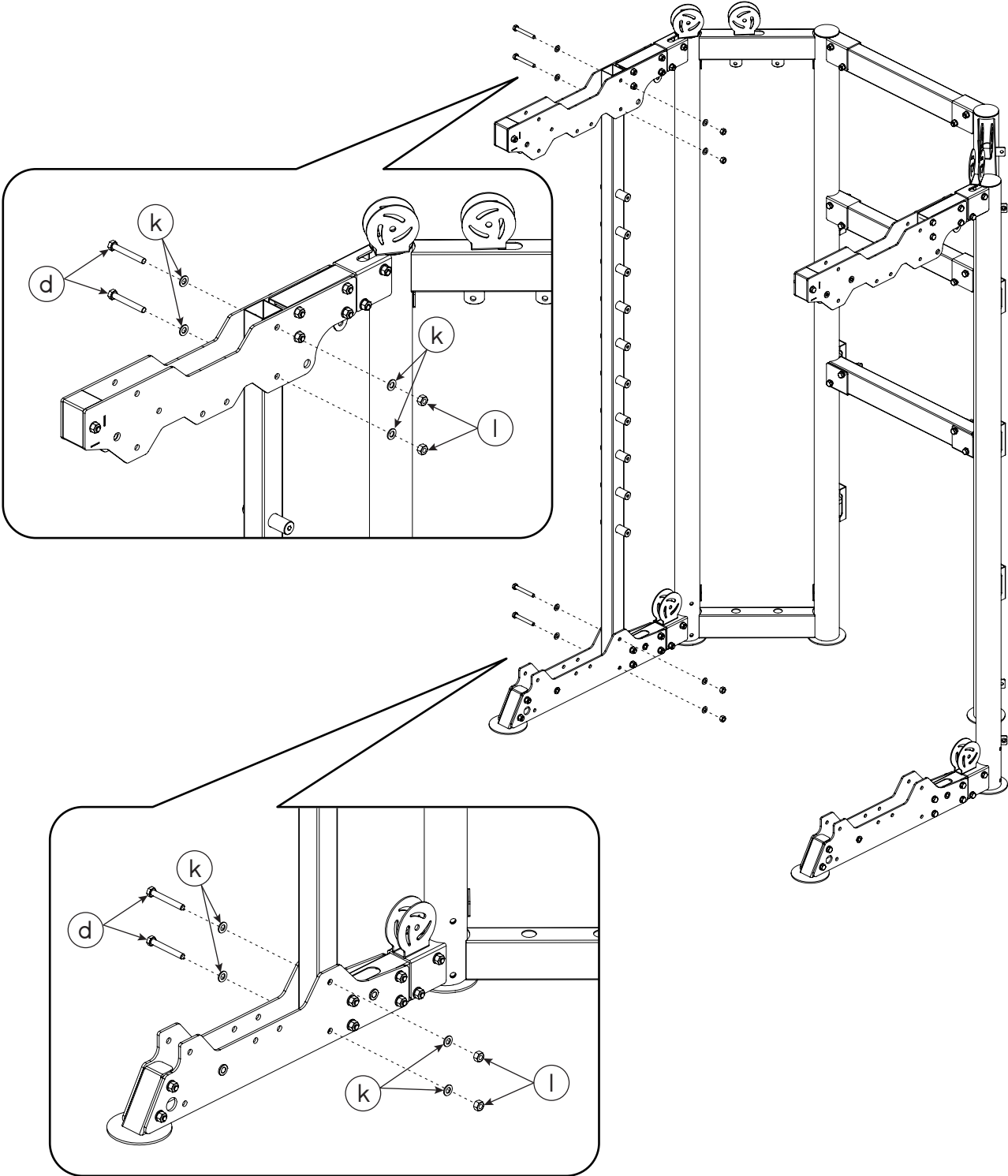


* Note: Smith Positioning Upright Frame ⑥ need to be installed correctly, please refer to the diagram above.

* NOTE: Don't tighten all the bolts until you finishing all the assembling steps of the main frame, otherwise the rack may be unbalanced or upwarp.

STEP 4 (Two People Are Required.)

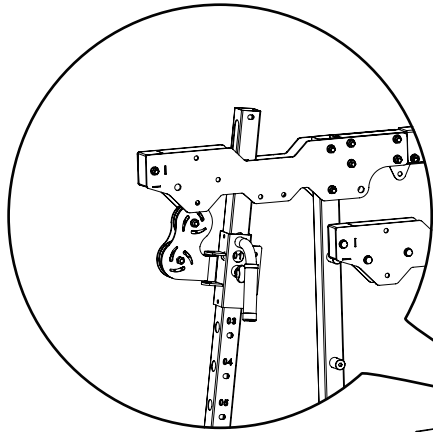
NO.	DESCRIPTION	QUANTITY
d	M10x75 Hex Bolt	4
k	M10 Washer	8
l	M10 Nut	4



* NOTE: Don't tighten all the bolts until you finishing all the assembling steps of the main frame, otherwise the rack may be unbalanced or upwarp.

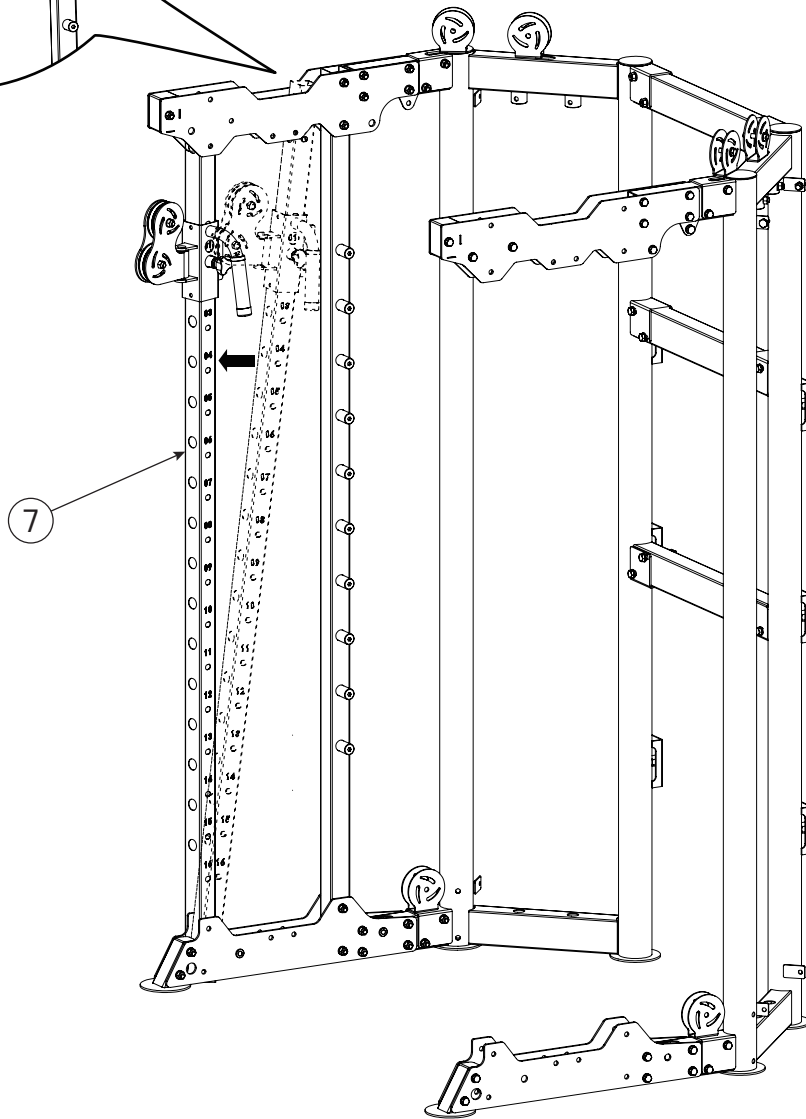
STEP 5 (Two People Are Required.)

NO.	DESCRIPTION	QUANTITY
7	Slider Upright Frame (Left)	1



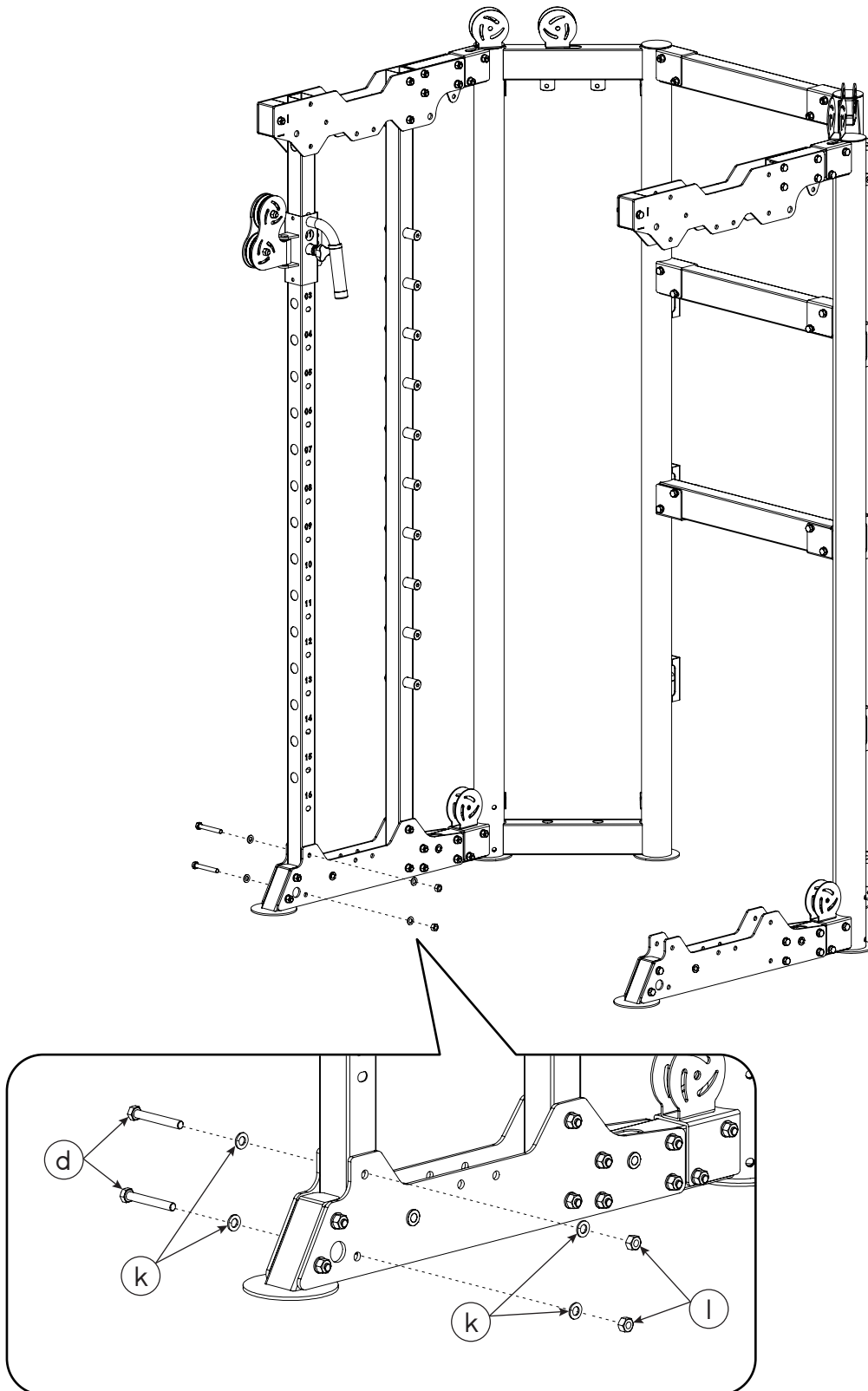
* Note: The head of Slider Upright Frame (Left)

⑦ can be put between the Top Bracket
④ first to easily install it in this step, as
shown in the figure.



STEP 6 (Two People Are Required.)

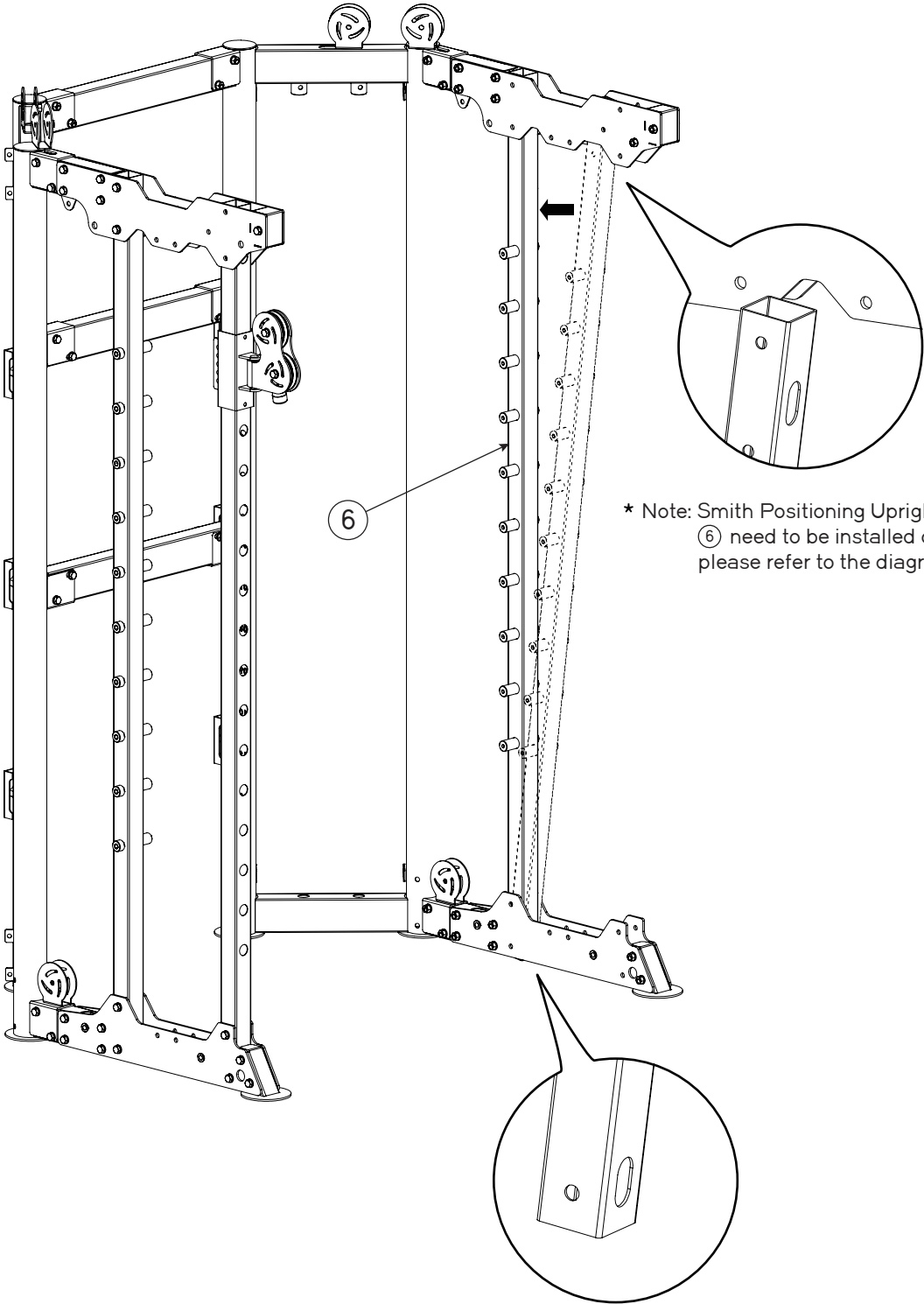
NO.	DESCRIPTION	QUANTITY
d	M10x75 Hex Bolt	2
k	M10 Washer	4
l	M10 Nut	2



* NOTE: Don't tighten all the bolts until you finishing all the assembling steps of the main frame, otherwise the rack may be unbalanced or upwarp.

STEP 7 (Two People Are Required.)

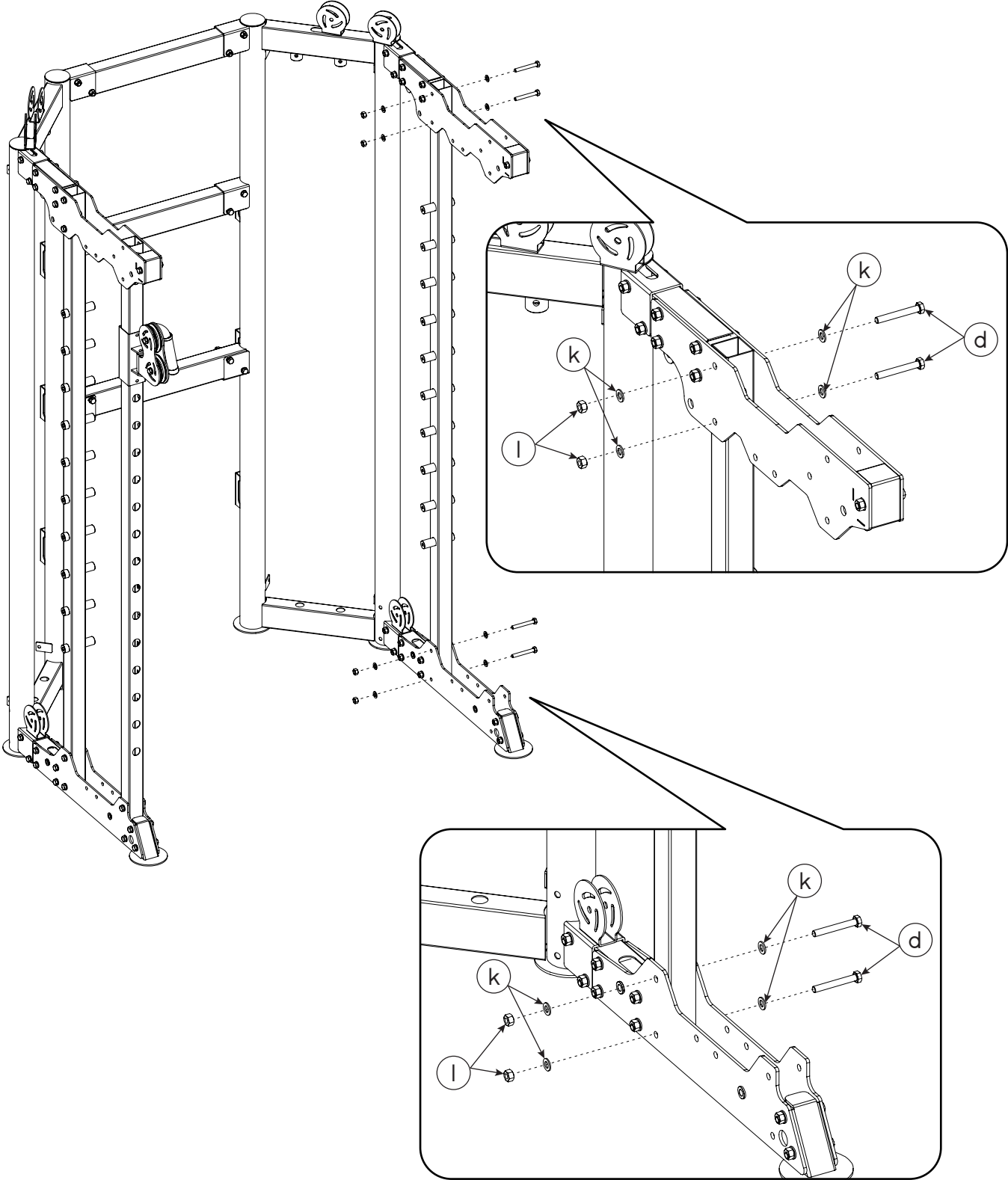
NO.	DESCRIPTION	QUANTITY
6	Smith Positioning Upright Frame	1



* NOTE: Don't tighten all the bolts until you finishing all the assembling steps of the main frame, otherwise the rack may be unbalanced or upwarp.

STEP 8 (Two People Are Required.)

NO.	DESCRIPTION	QUANTITY
d	M10x75 Hex Bolt	4
k	M10 Washer	8
l	M10 Nut	4

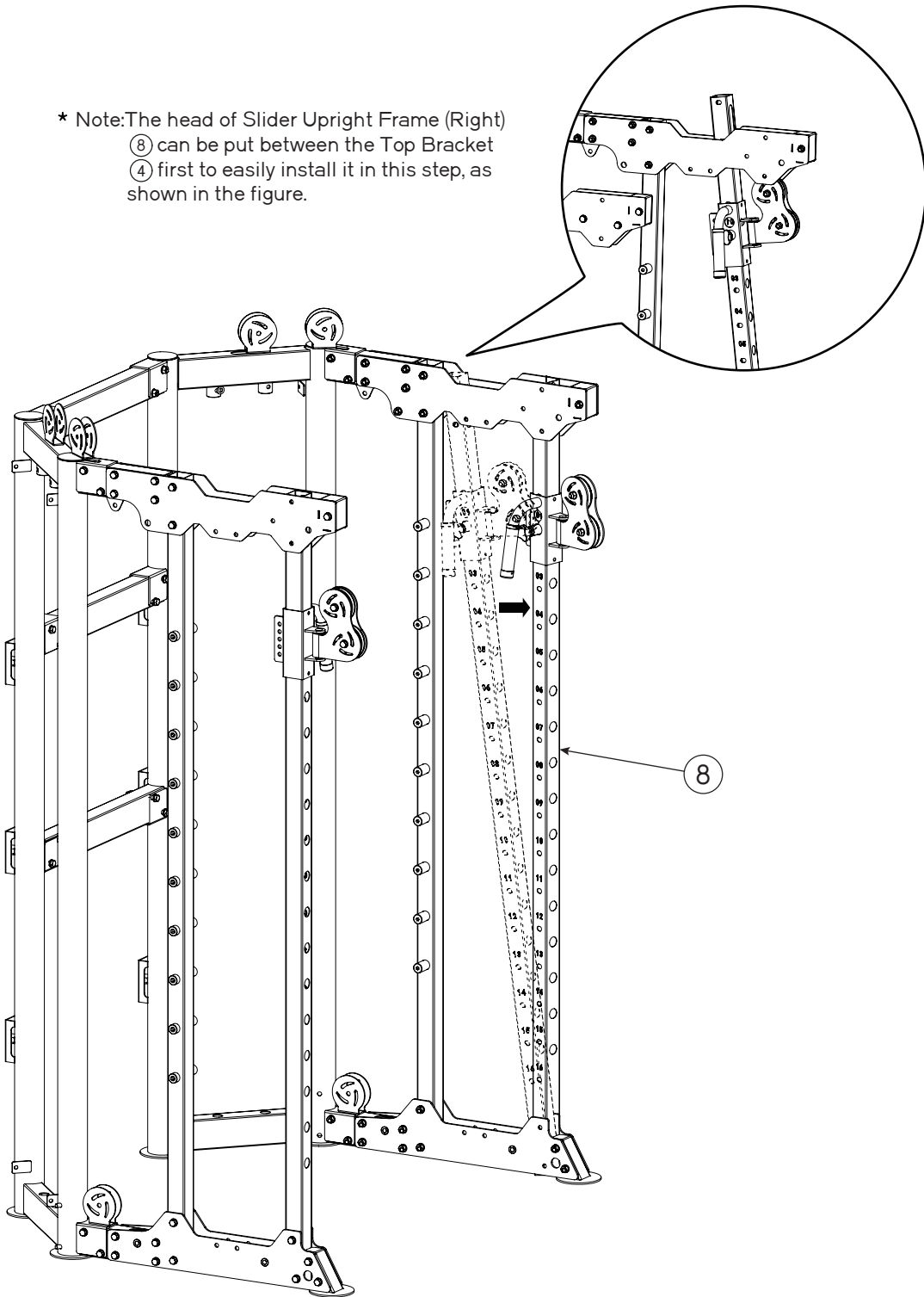


* NOTE: Don't tighten all the bolts until you finishing all the assembling steps of the main frame, otherwise the rack may be unbalanced or upwarp.

STEP 9 (Two People Are Required.)

NO.	DESCRIPTION	QUANTITY
8	Slider Upright Frame (Right)	1

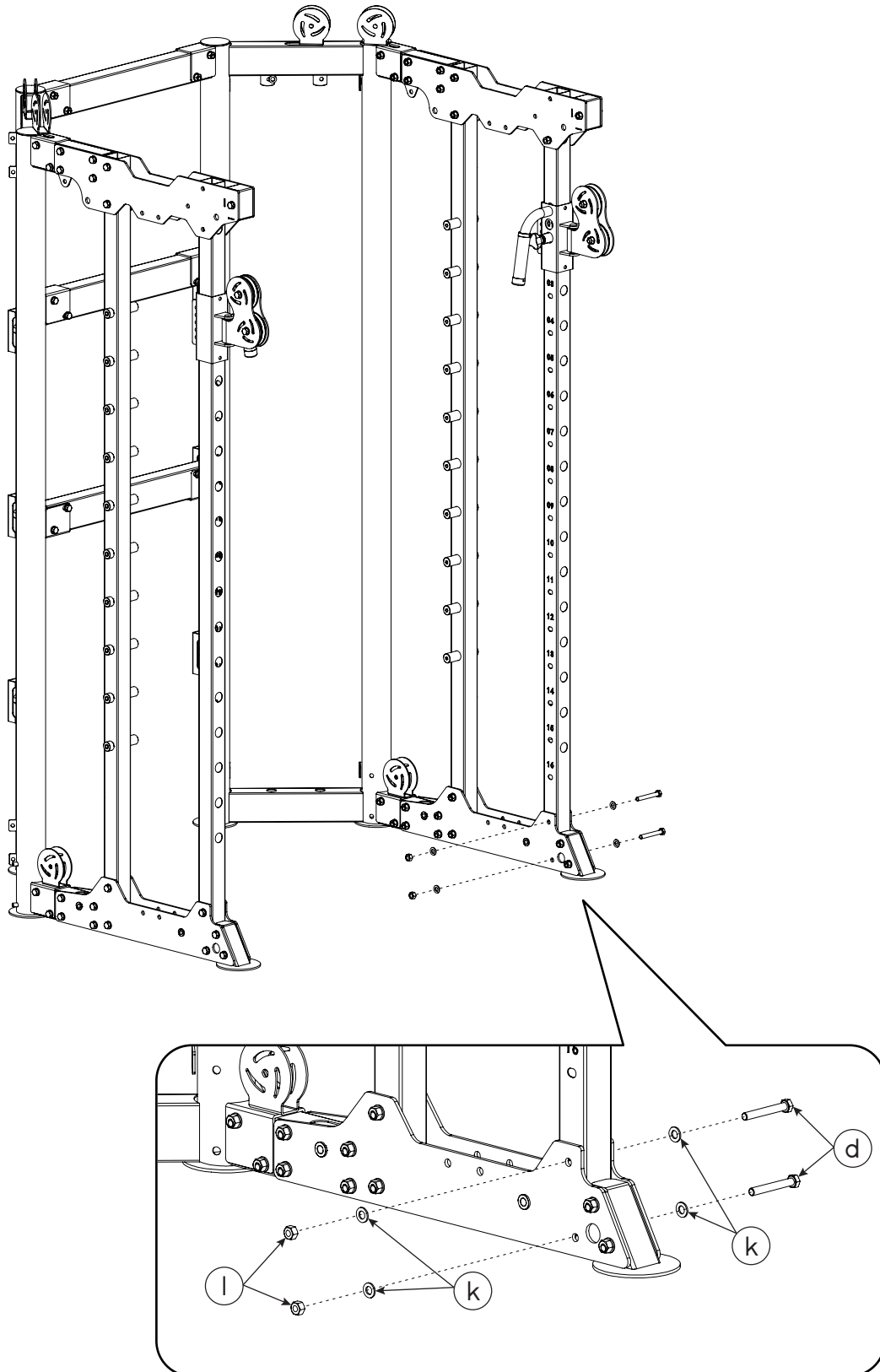
* Note: The head of Slider Upright Frame (Right) ⑧ can be put between the Top Bracket ④ first to easily install it in this step, as shown in the figure.



* NOTE: Don't tighten all the bolts until you finishing all the assembling steps of the main frame, otherwise the rack may be unbalanced or upwarp.

STEP 10 (Two People Are Required.)

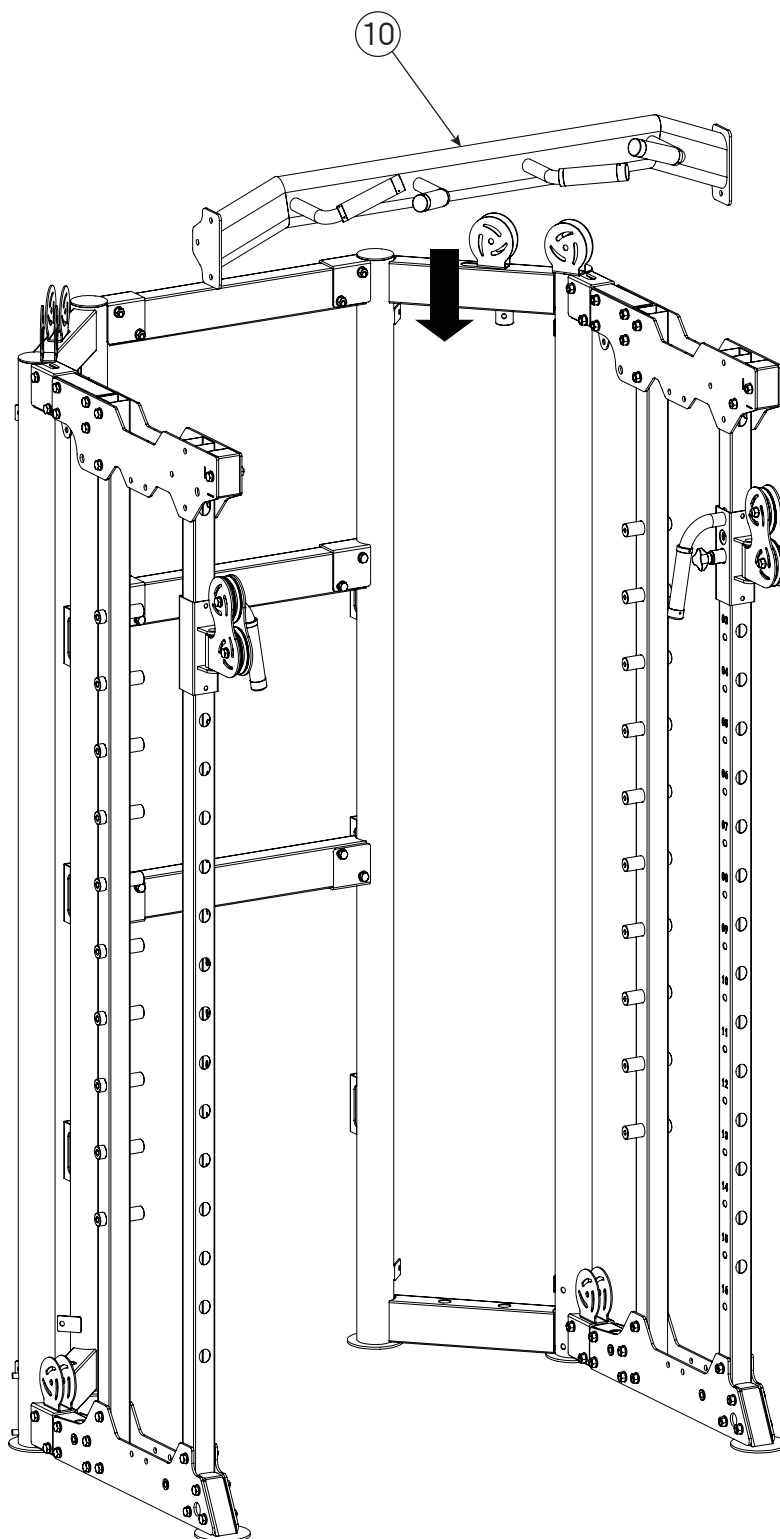
NO.	DESCRIPTION	QUANTITY
d	M10x75 Hex Bolt	2
k	M10 Washer	4
l	M10 Nut	2



* NOTE: Don't tighten all the bolts until you finishing all the assembling steps of the main frame, otherwise the rack may be unbalanced or upwarp.

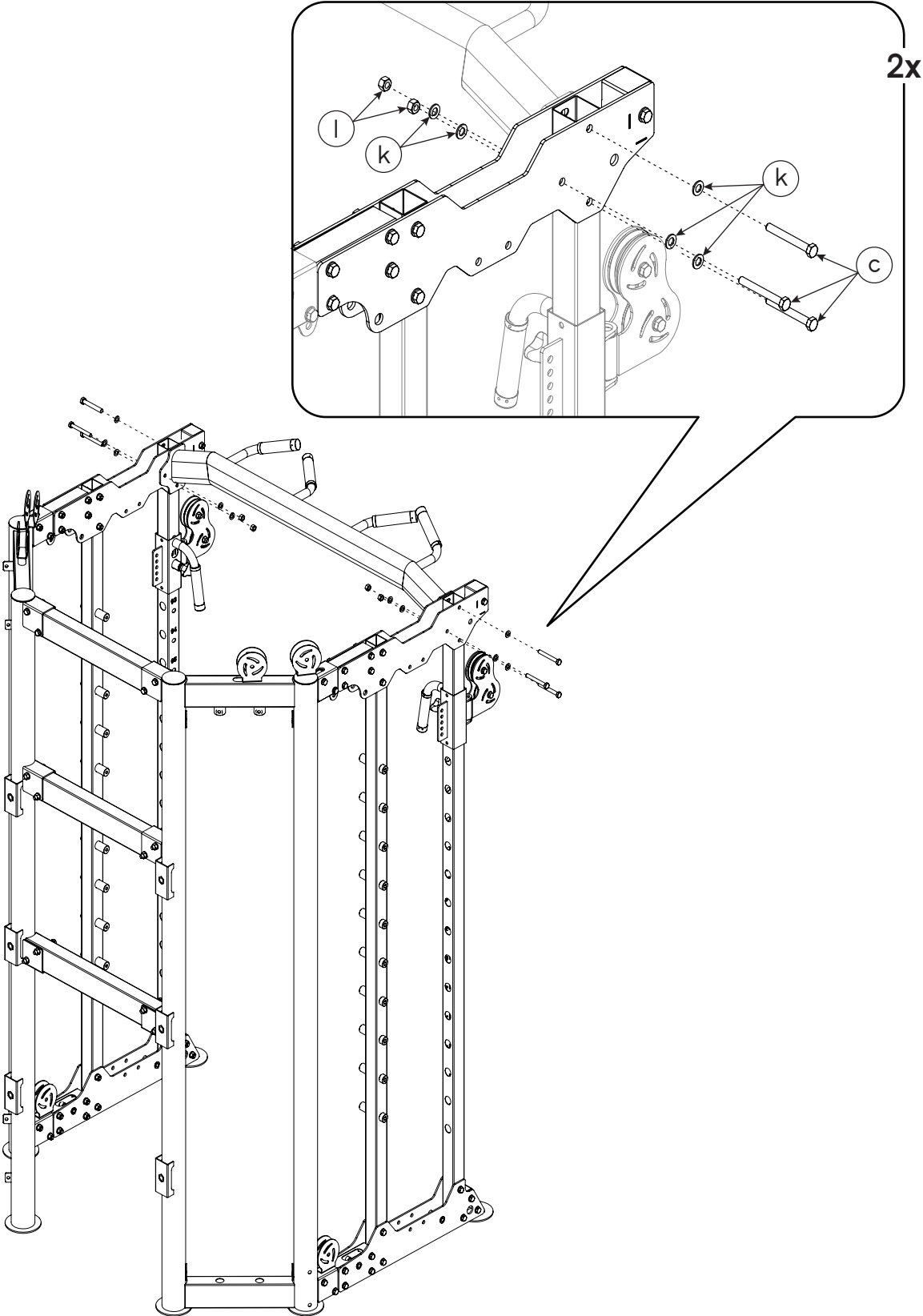
STEP 11-2 (Two People Are Required.)

NO.	DESCRIPTION	QUANTITY
10	Pull-up Bar	1
c	M10x80 Hex Bolt	6
k	M10 Washer	10
l	M10 Nut	4



* NOTE: Don't tighten all the bolts until you finishing all the assembling steps of the main frame, otherwise the rack may be unbalanced or upwarp.

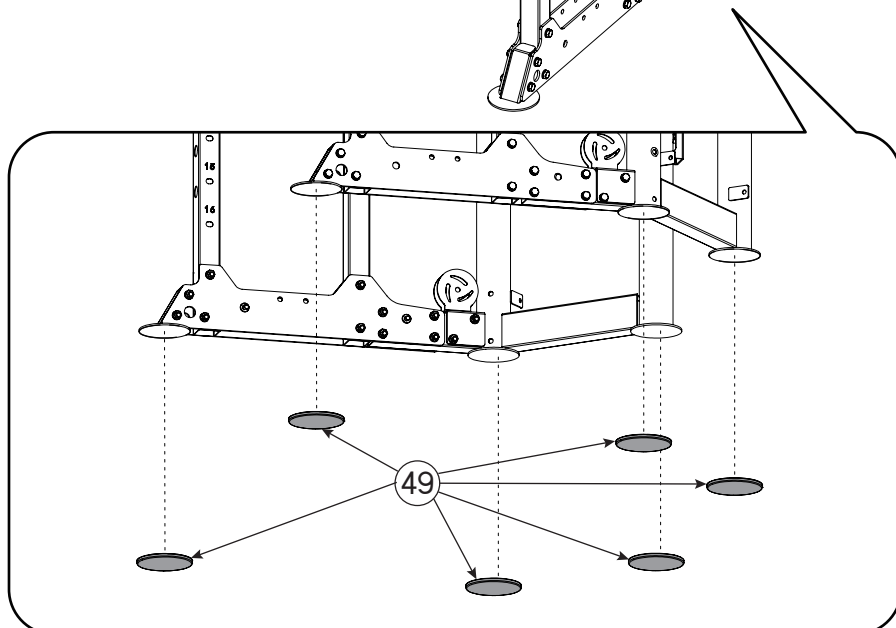
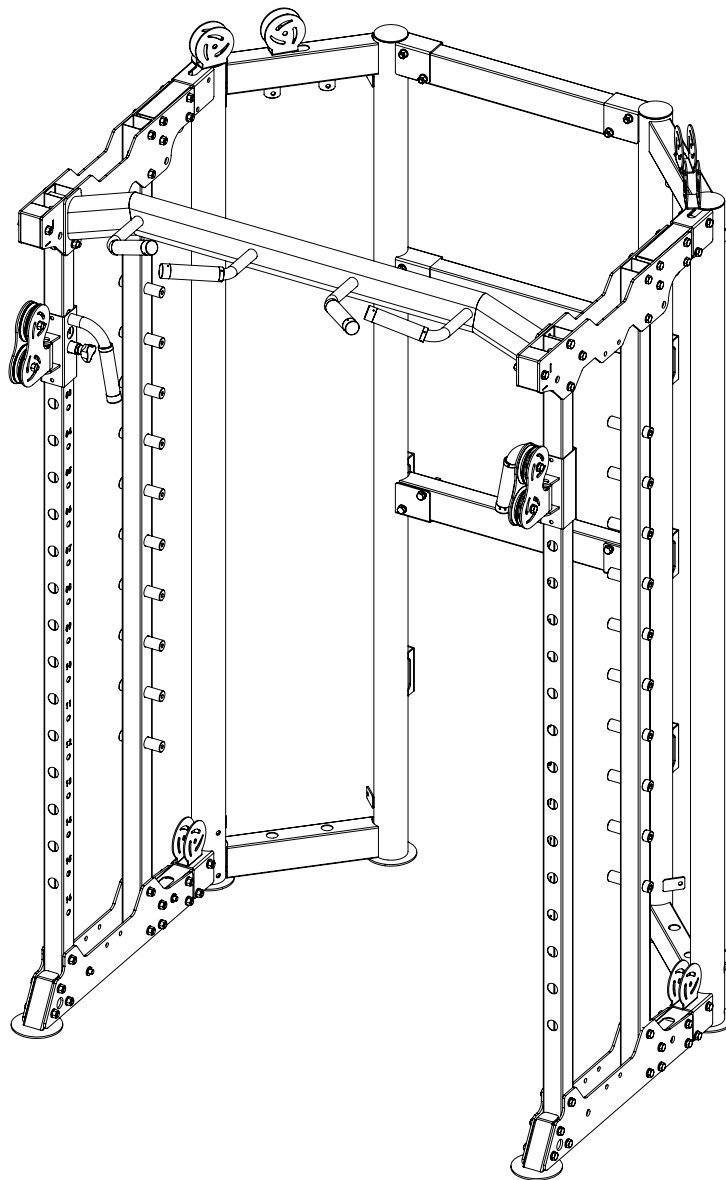
STEP 11-2 (Two People Are Required.)



* NOTE: Don't tighten all the bolts until you finishing all the assembling steps of the main frame, otherwise the rack may be unbalanced or upwarp.

STEP 12 (Two People Are Required.)

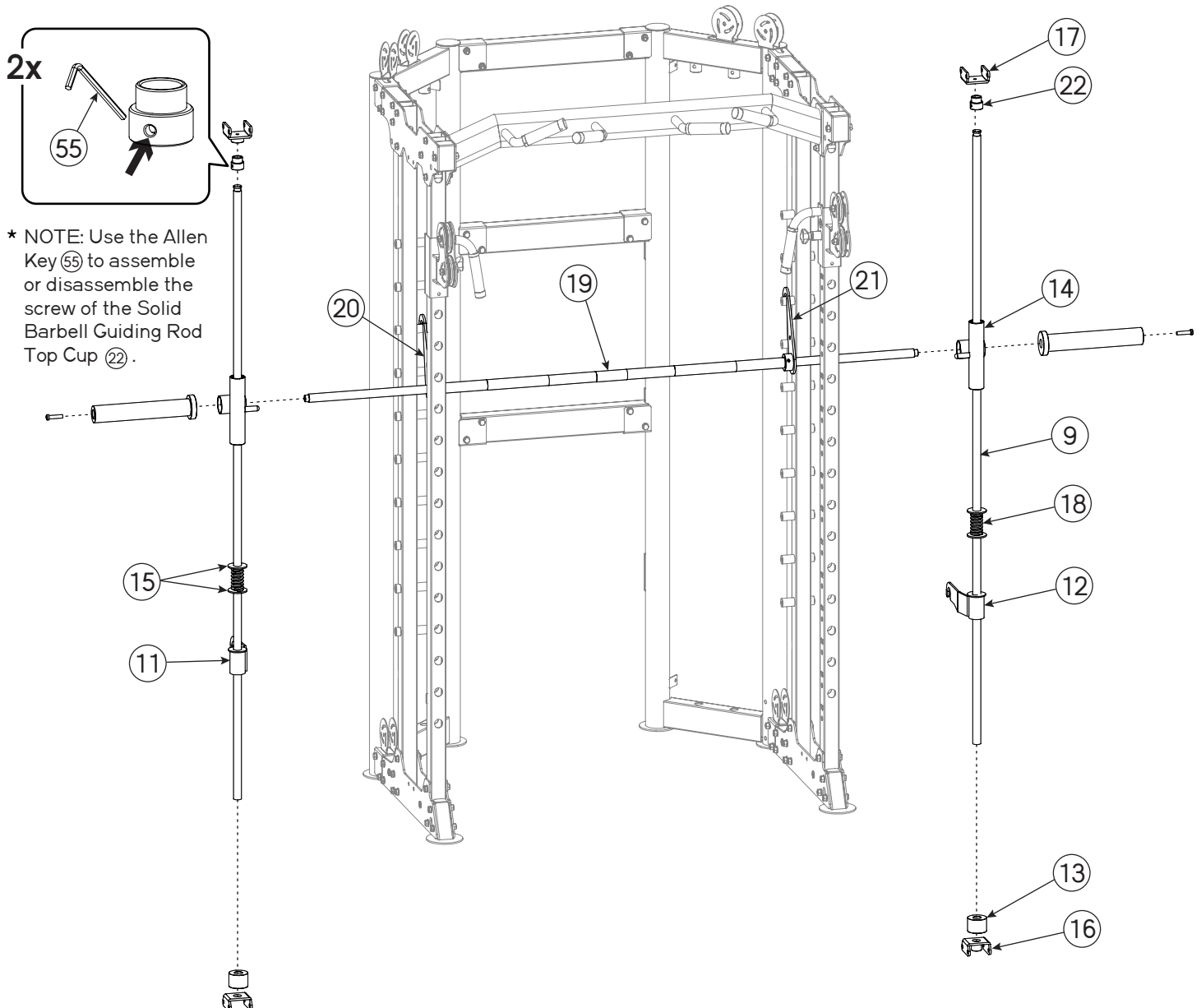
NO.	DESCRIPTION	QUANTITY
49	Foot Pad	6



* NOTE: Don't tighten all the bolts until you finishing all the assembling steps of the main frame, otherwise the rack may be unbalanced or upwarp.

STEP 13 (Two People Are Required.)

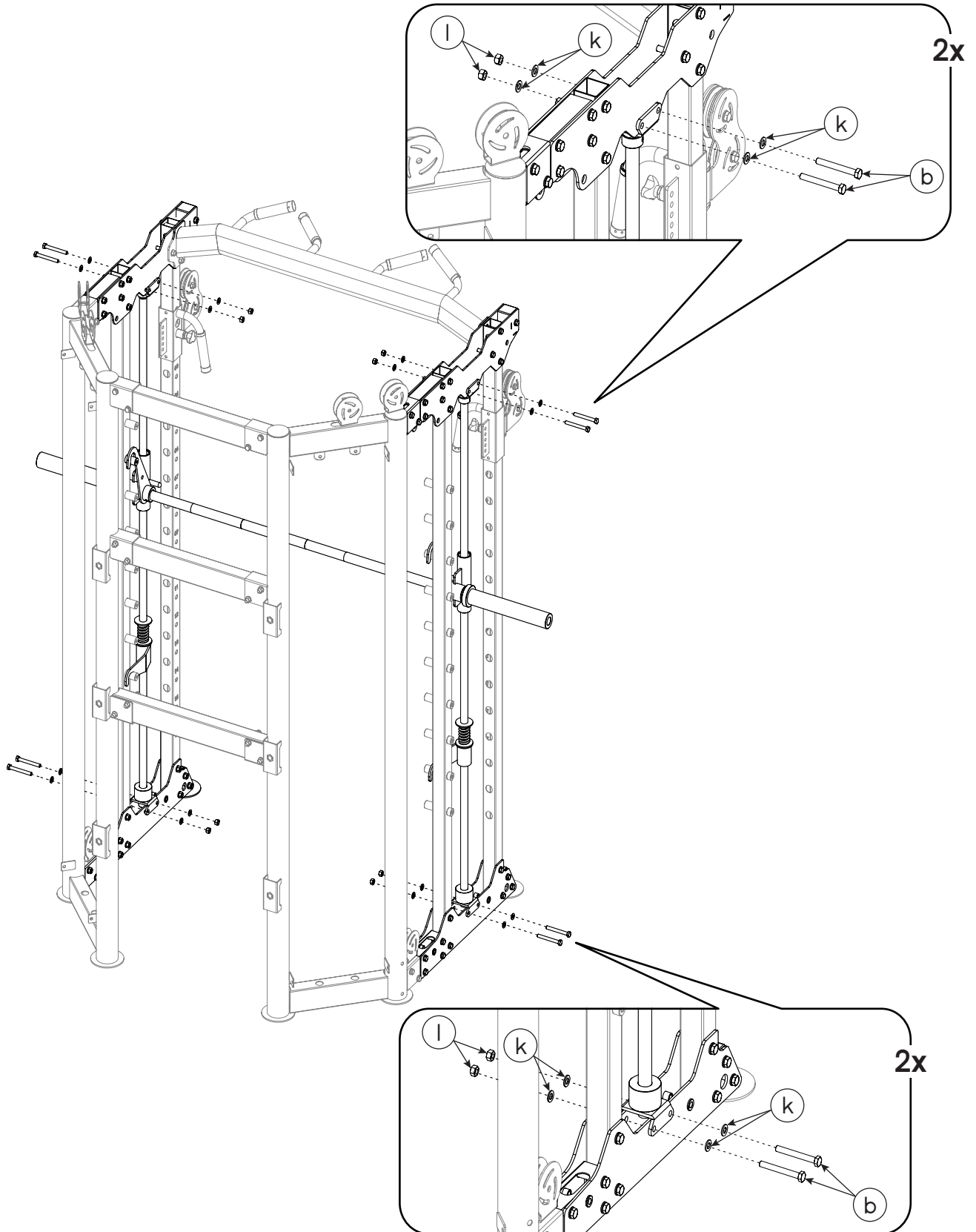
NO.	DESCRIPTION	QUANTITY
9	Solid Barbell Guiding Rod	2
11	Barbell Safety Support Hook (Left)	1
12	Barbell Safety Support Hook (Right)	1
13	Barbell Guiding Rod Bottom Seat	2
14	Barbell Positioning Tube	2
15	Spring Washer	4
16	Solid Barbell Guiding Rod Bottom Pad	2
17	Barbell Guiding Rod Top Seat	2
18	Spring	2
19	Smith Barbell	1
20	Barbell Positioning Hook (Left)	1
21	Barbell Positioning Hook (Right)	1
22	Solid Barbell Guiding Rod Top Cup	2



* NOTE: Don't tighten all the bolts until you finishing all the assembling steps of the main frame, otherwise the rack may be unbalanced or upwarp.

STEP 14 (Two People Are Required.)

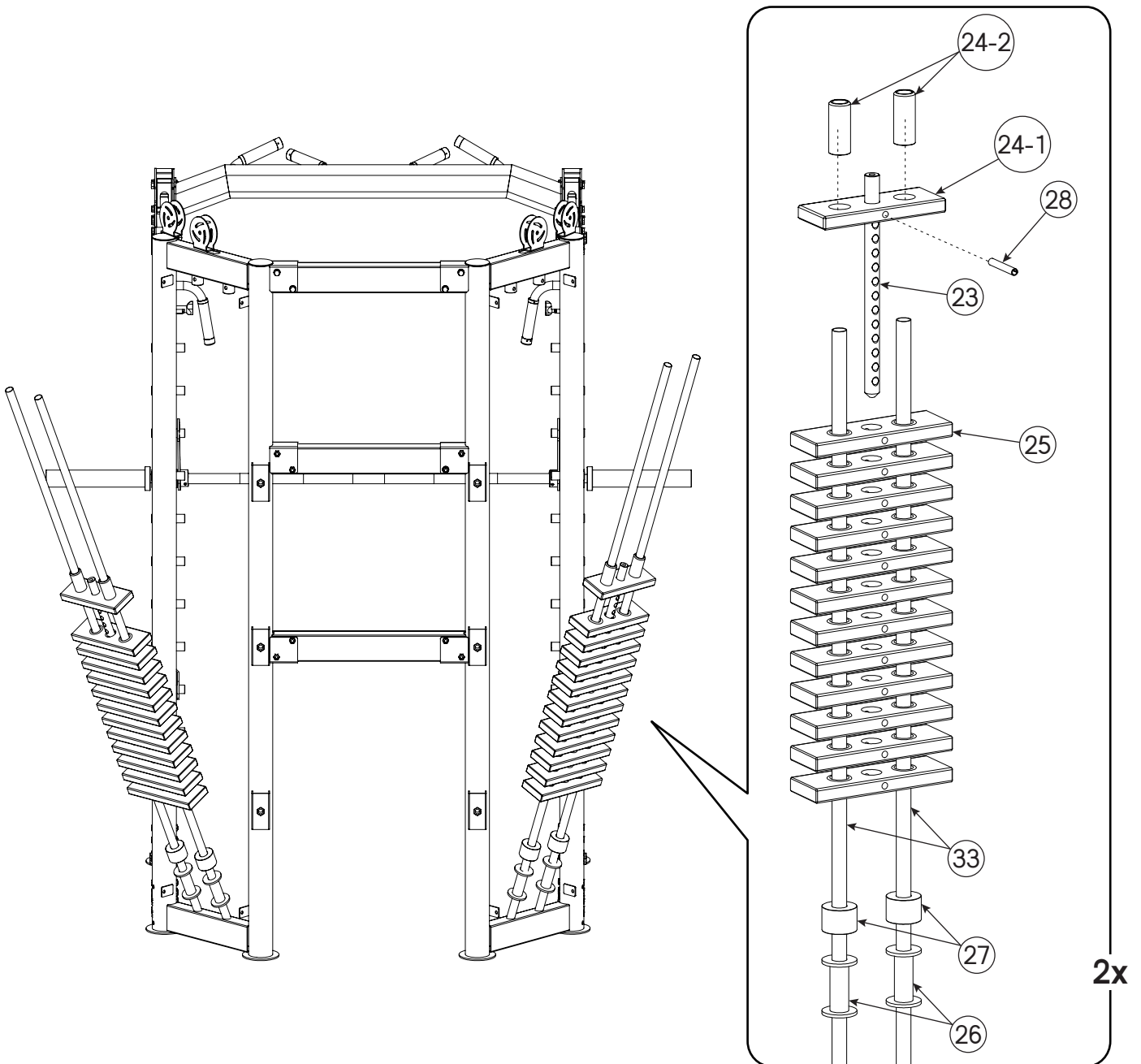
NO.	DESCRIPTION	QUANTITY
b	M10x85 Hex Bolt	8
k	M10 Washer	16
l	M10 Nut	8



* NOTE: Don't tighten all the bolts until you finishing all the assembling steps of the main frame, otherwise the rack may be unbalanced or upwarp.

STEP 15-1 (Two People Are Required.)

NO.	DESCRIPTION	QUANTITY
23	Hoist	2
24-1	Top Weight Stack	2
24-2	Weight Stack Plastic Sleeve	4
25	Weight Stack	24
26	Support Tube	4
27	Rubber Bumper	4
28	Weight Stack Pin	2
33	Hollow Pulley System Guiding Rod	4

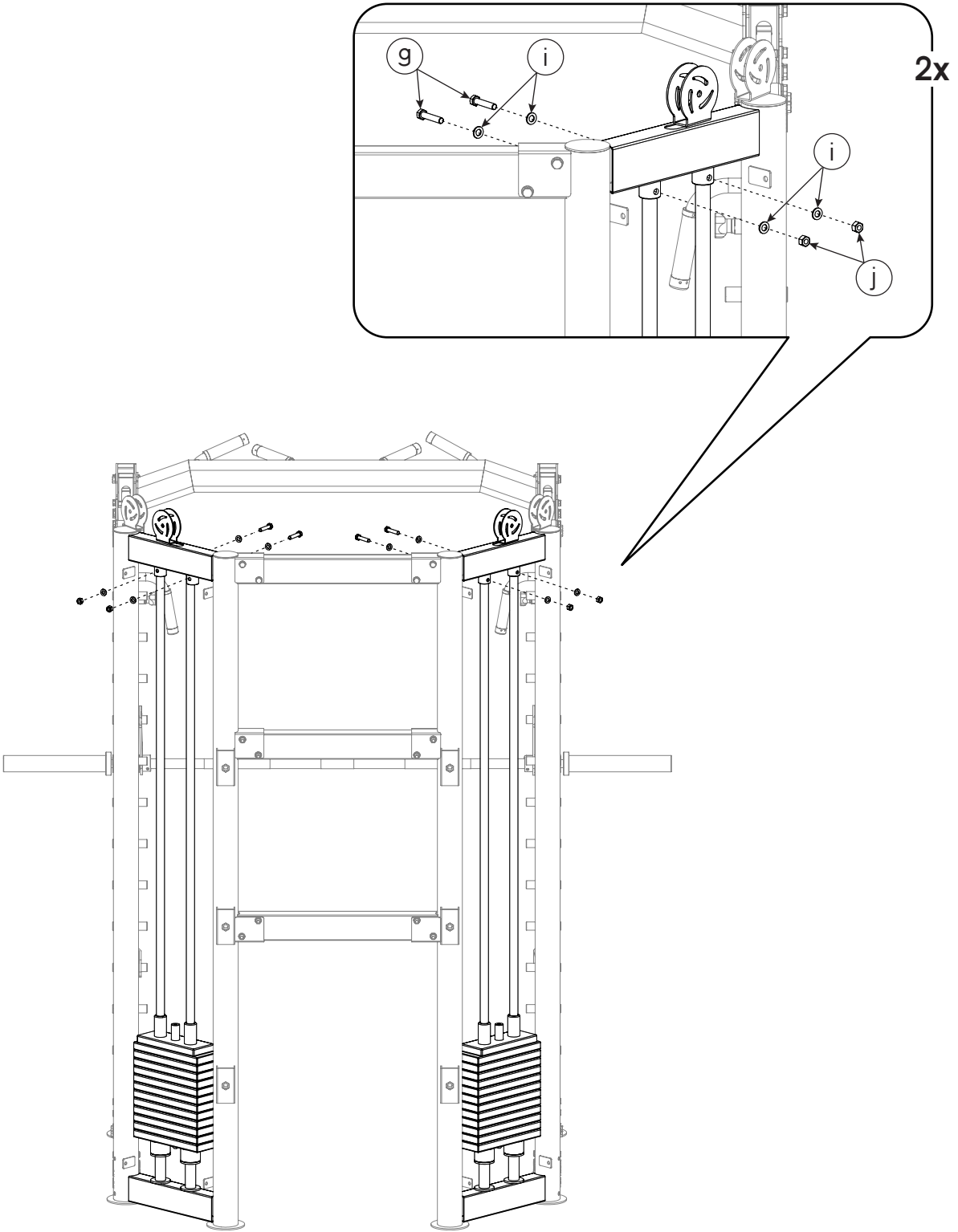


* Note: Carefully install the following parts from the top just as the diagram shows.

* NOTE: Don't tighten all the bolts until you finishing all the assembling steps of the main frame, otherwise the rack may be unbalanced or upwarp.

STEP 15-1 (Two People Are Required.)

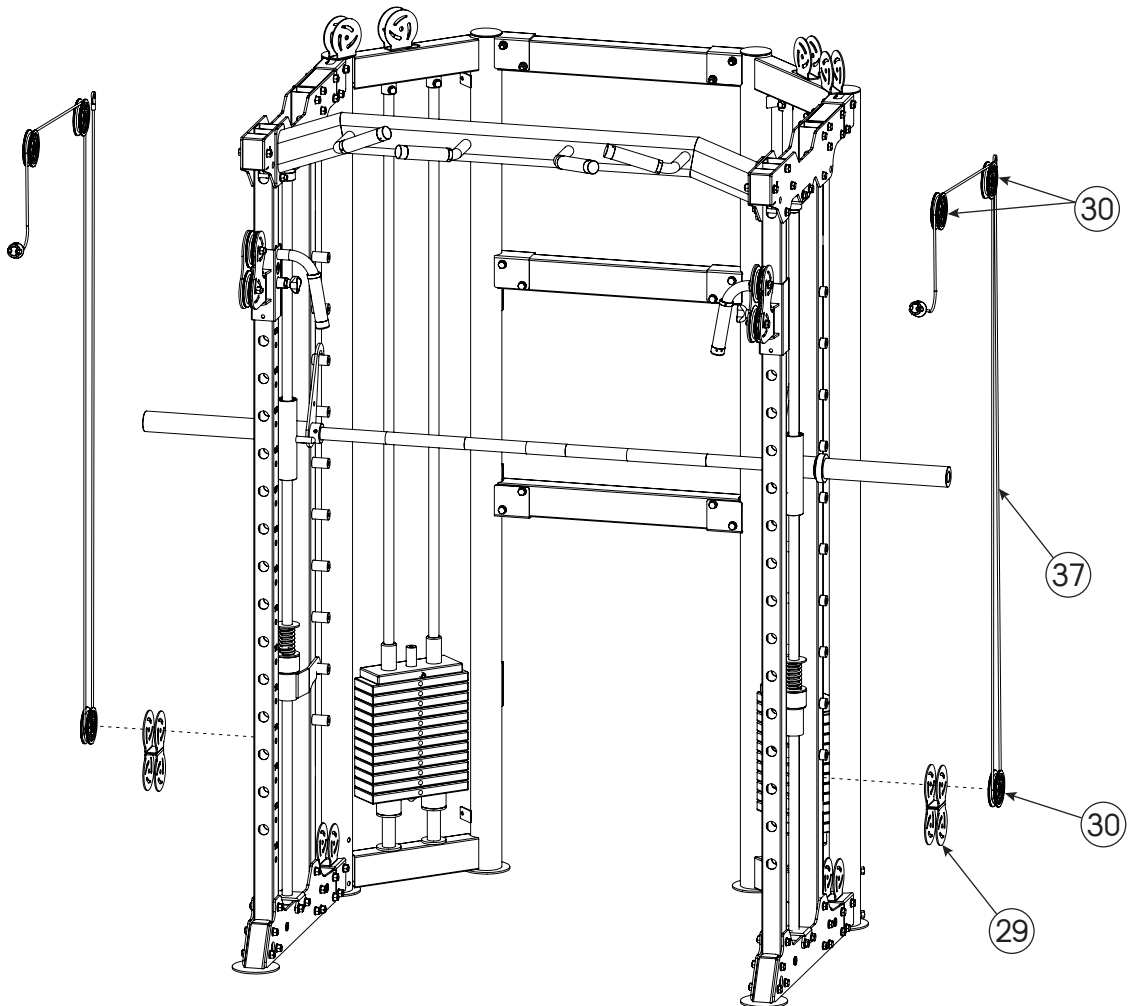
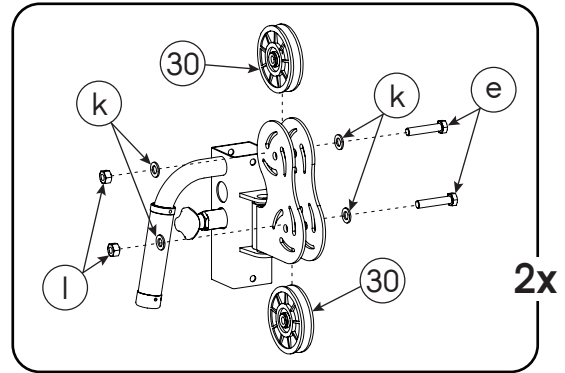
NO.	DESCRIPTION	QUANTITY
g	M8x45 Hex Bolt	4
i	M8 Washer	8
j	M8 Nut	4



* NOTE: Don't tighten all the bolts until you finishing all the assembling steps of the main frame, otherwise the rack may be unbalanced or upwarp.

STEP 16 (Two People Are Required.)

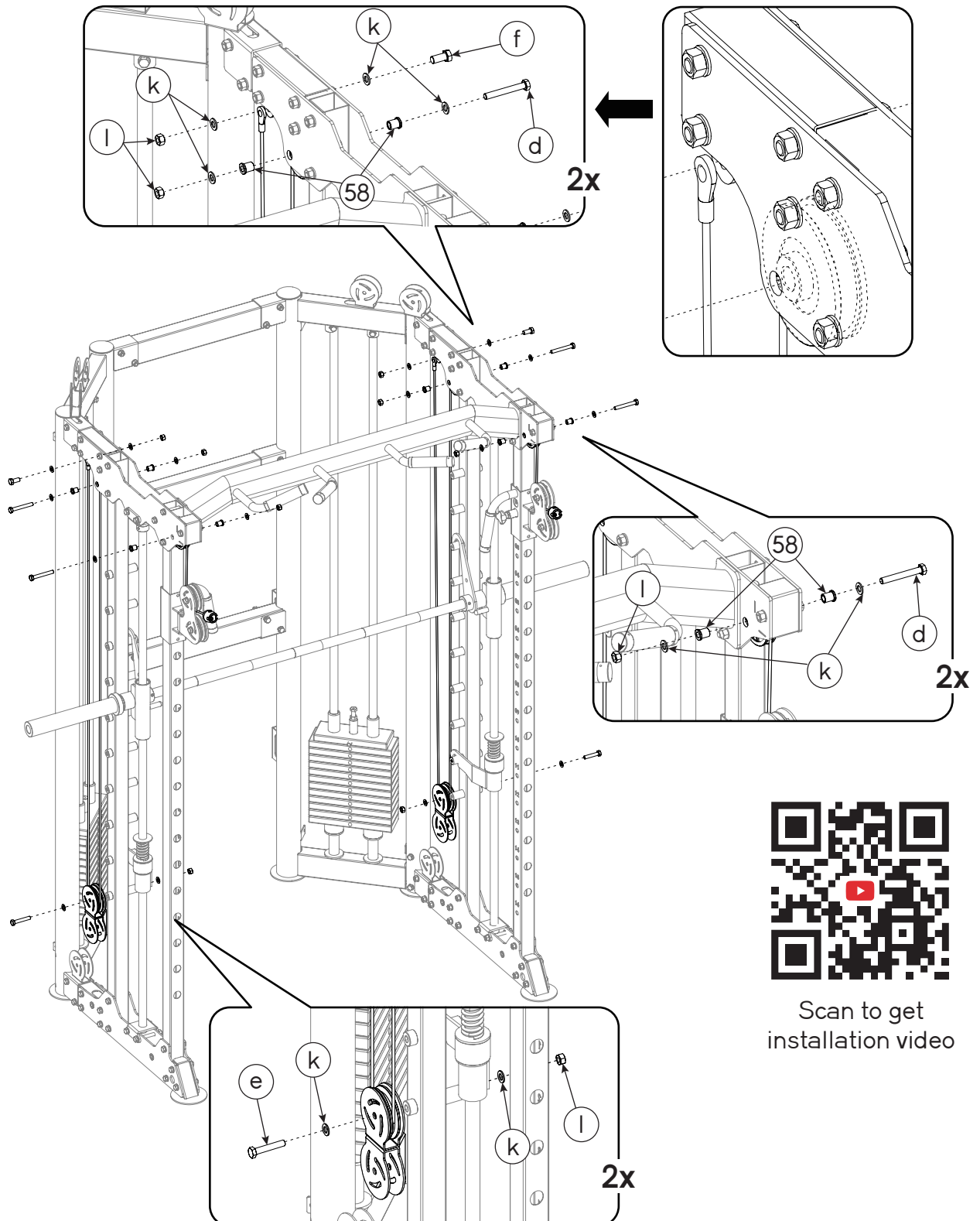
NO.	DESCRIPTION	QUANTITY
29	Double Pulley Cover	2
30	Pulley A	10
37	Cable A	2
e	M10x45 Hex Bolt	4
k	M10 Washer	8
l	M10 Nut	4



* NOTE: Don't tighten all the bolts until you finishing all the assembling steps of the main frame, otherwise the rack may be unbalanced or upwarp.

STEP 17-1 (Two People Are Required.)

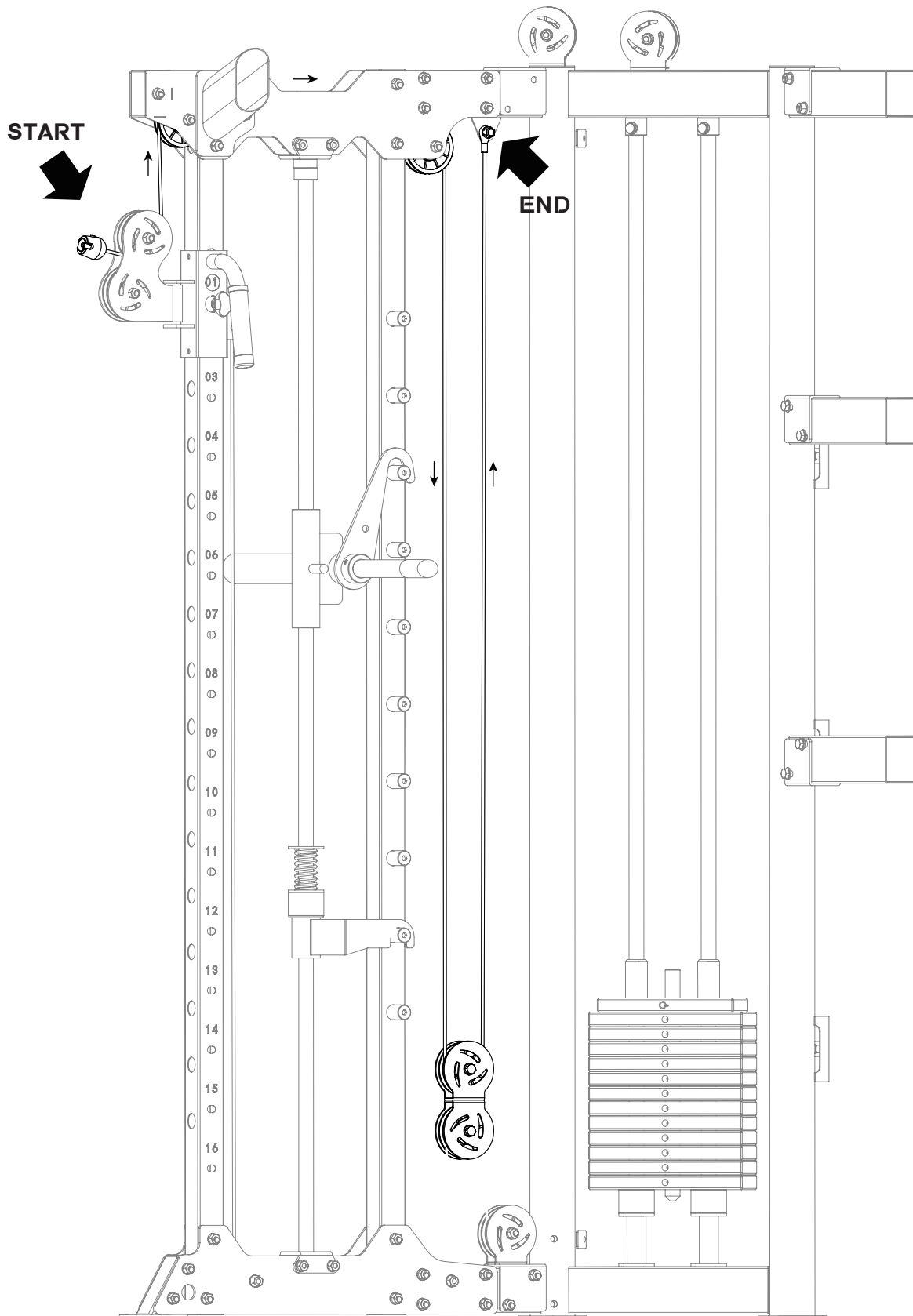
NO.	DESCRIPTION	QUANTITY
58	Pulley Peg	8
d	M10x75 Hex Bolt	4
e	M10x45 Hex Bolt	2
f	M10x25 Hex Bolt	2
k	M10 Washer	16
l	M10 Nut	8



Scan to get
installation video

* NOTE: Don't tighten all the bolts until you finishing all the assembling steps of the main frame, otherwise the rack may be unbalanced or upwarp.

STEP 17-2(Two People Are Required.)

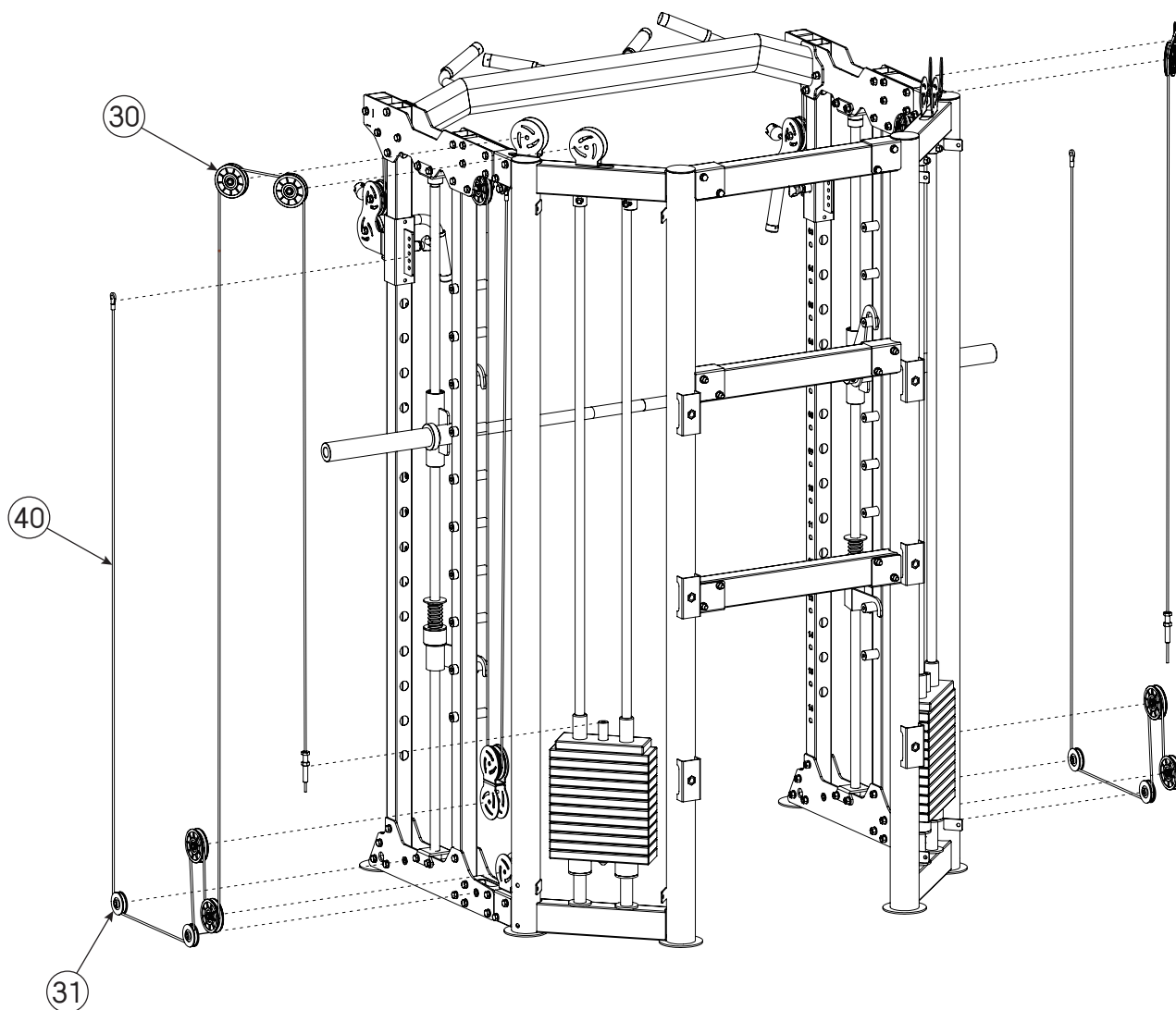


* Note: Cable A Diagram as shown above.

* NOTE: Don't tighten all the bolts until you finishing all the assembling steps of the main frame, otherwise the rack may be unbalanced or upwarp.

STEP 18 (Two People Are Required.)

NO.	DESCRIPTION	QUANTITY
30	Pulley A	8
31	Pulley B	4
40	Cable B	2



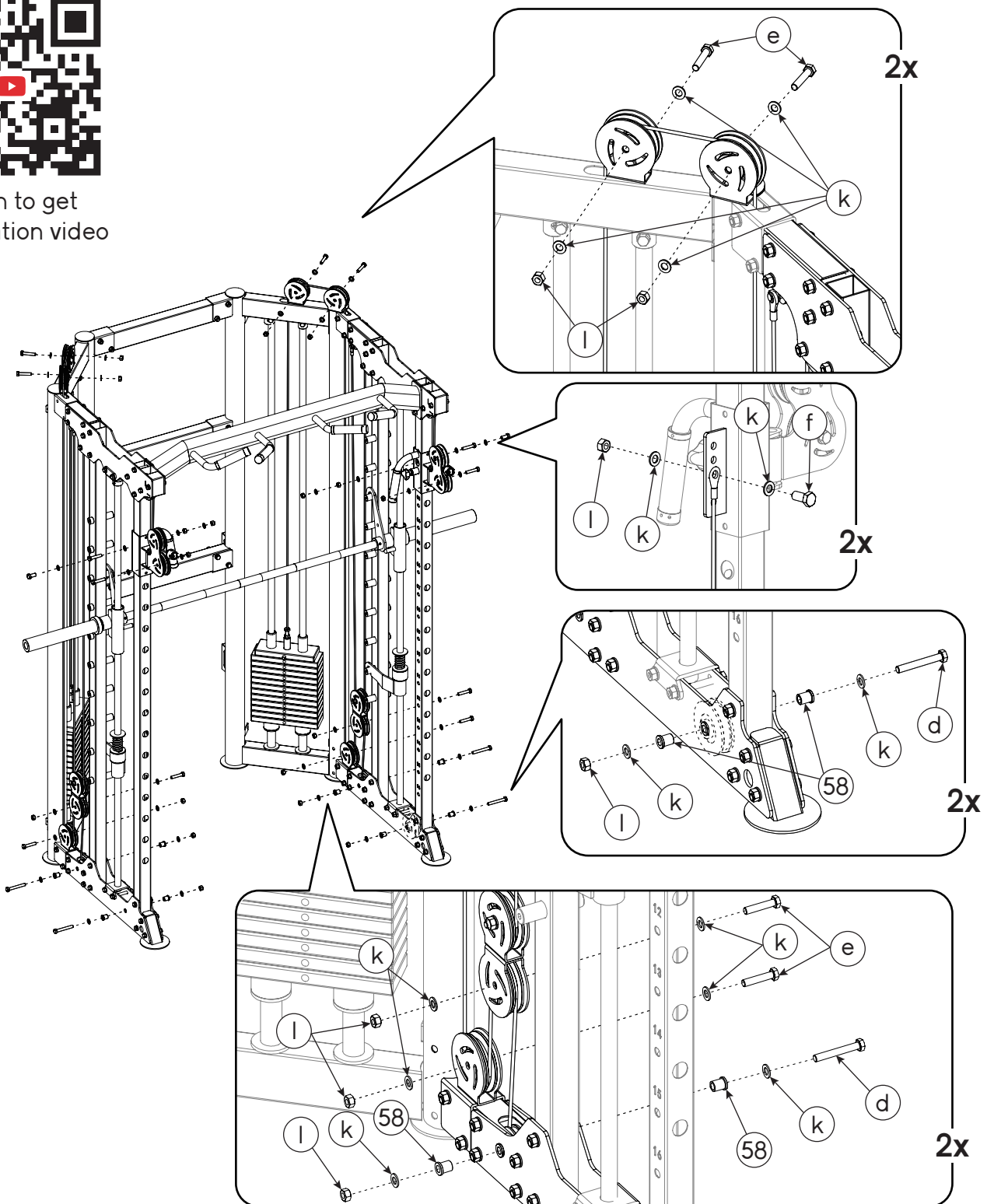
* NOTE: Don't tighten all the bolts until you finishing all the assembling steps of the main frame, otherwise the rack may be unbalanced or upwarp.

STEP 19-1 (Two People Are Required.)

NO.	DESCRIPTION	QUANTITY
58	Pulley Peg	8
d	M10x75 Hex Bolt	4
e	M10x45 Hex Bolt	8
f	M10x25 Hex Bolt	2
k	M10 Washer	28
l	M10 Nut	14

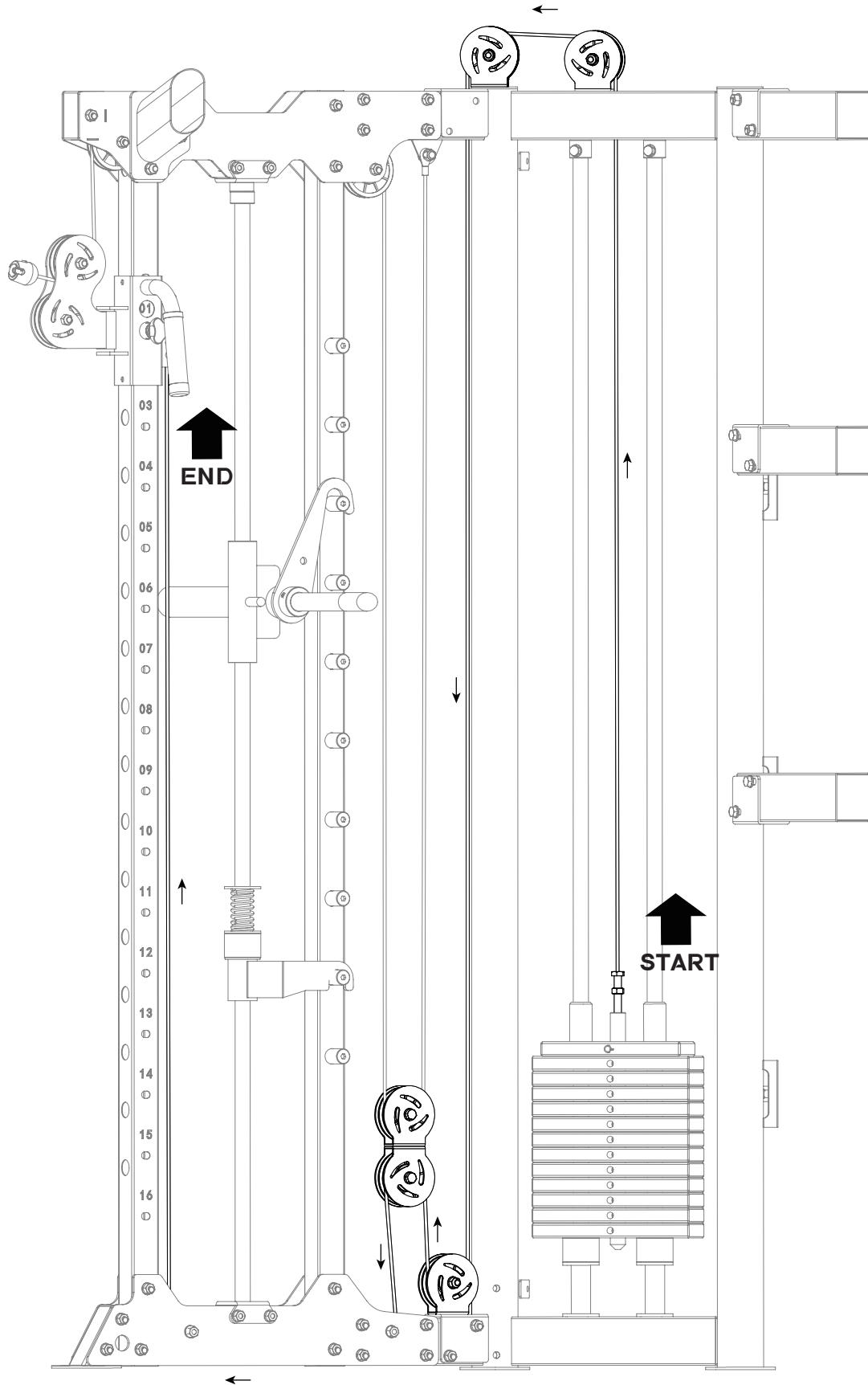


Scan to get
installation video



* NOTE: Don't tighten all the bolts until you finishing all the assembling steps of the main frame, otherwise the rack may be unbalanced or upwarp.

STEP 19-2 (Two People Are Required.)

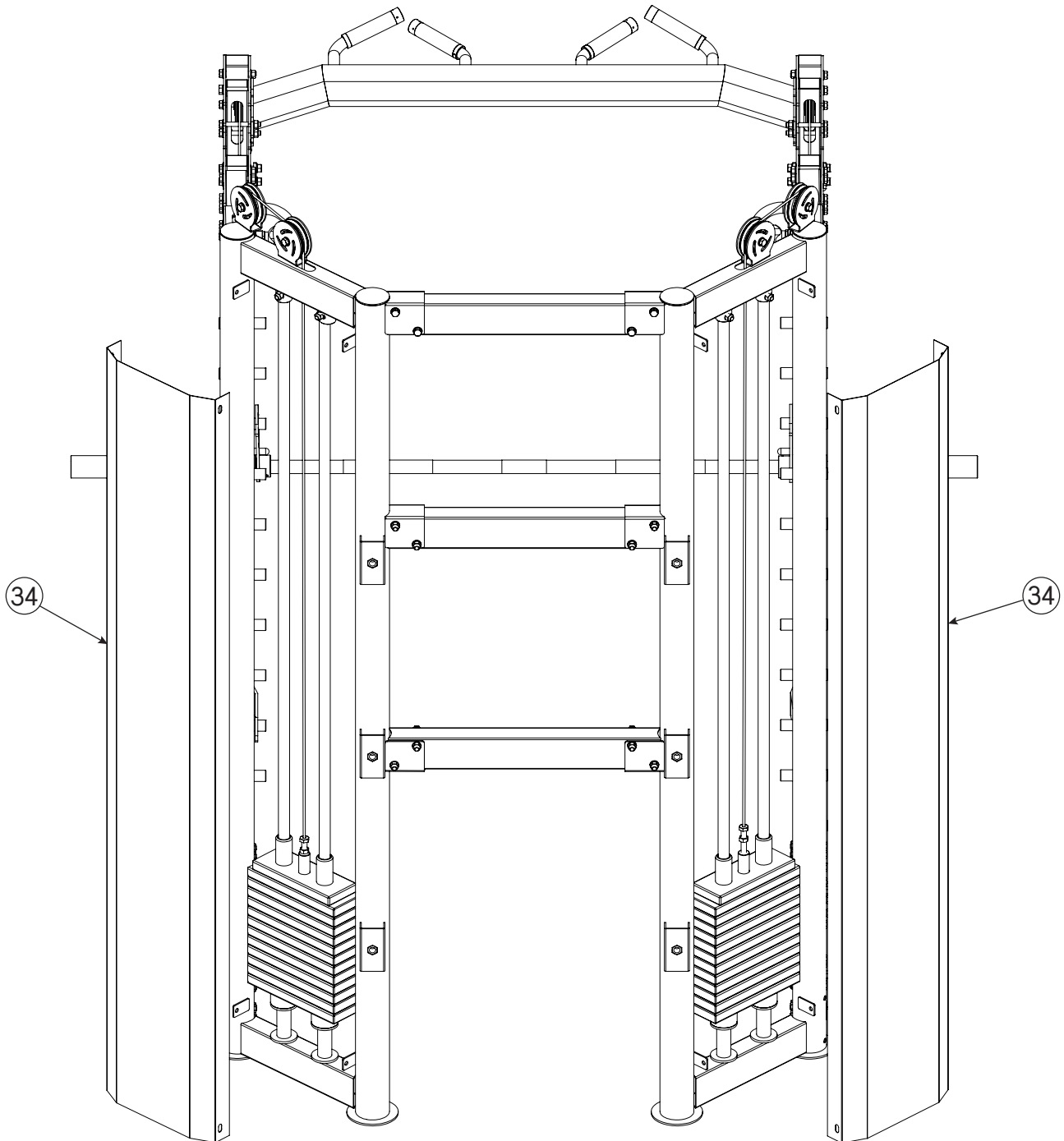


* Note: Cable B Diagram as shown above.

* NOTE: Don't tighten all the bolts until you finishing all the assembling steps of the main frame, otherwise the rack may be unbalanced or upwarp.

STEP 20 (Two People Are Required.)

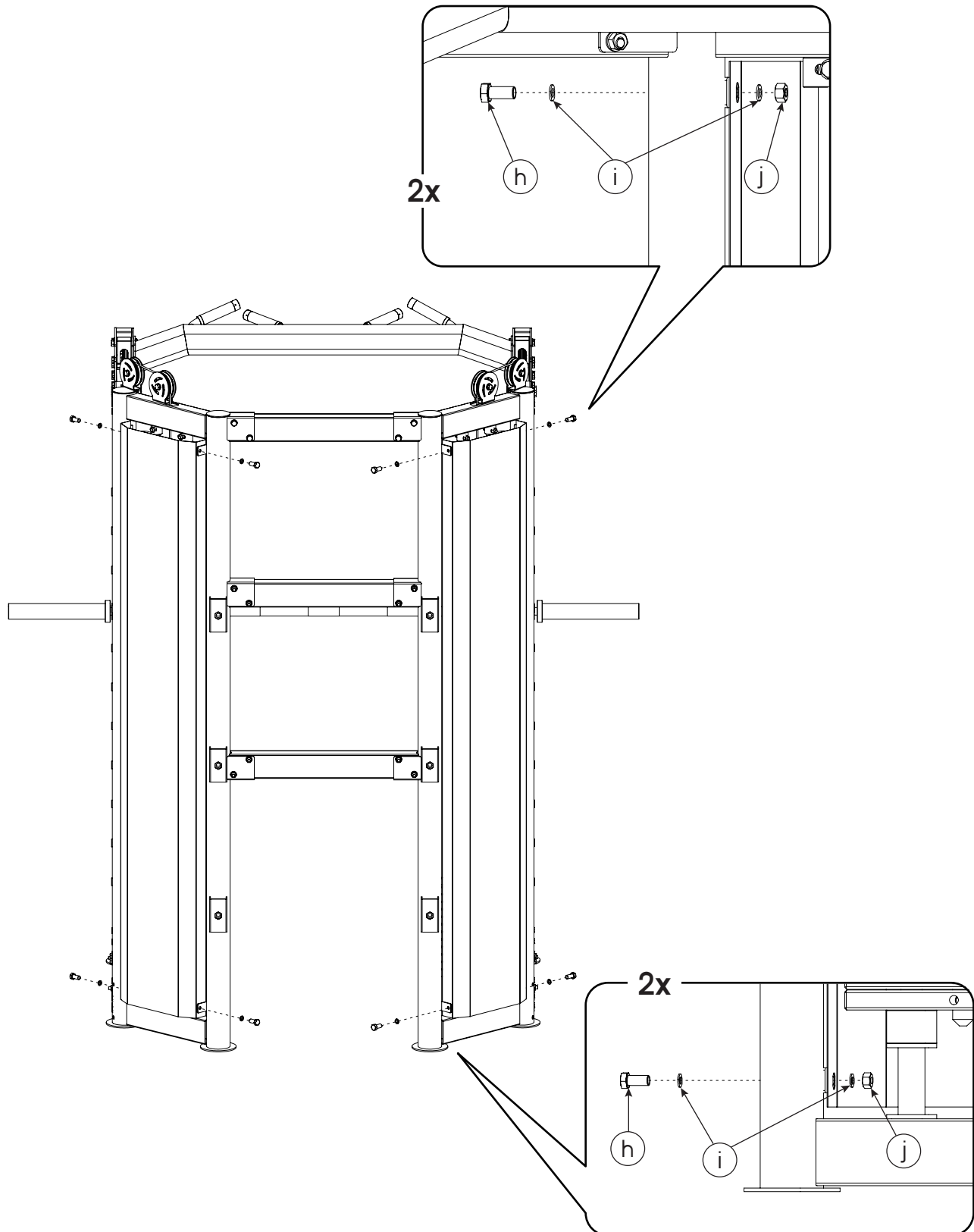
NO.	DESCRIPTION	QUANTITY
34	Weight Stack Cover	2



* NOTE: Don't tighten all the bolts until you finishing all the assembling steps of the main frame, otherwise the rack may be unbalanced or upwarp.

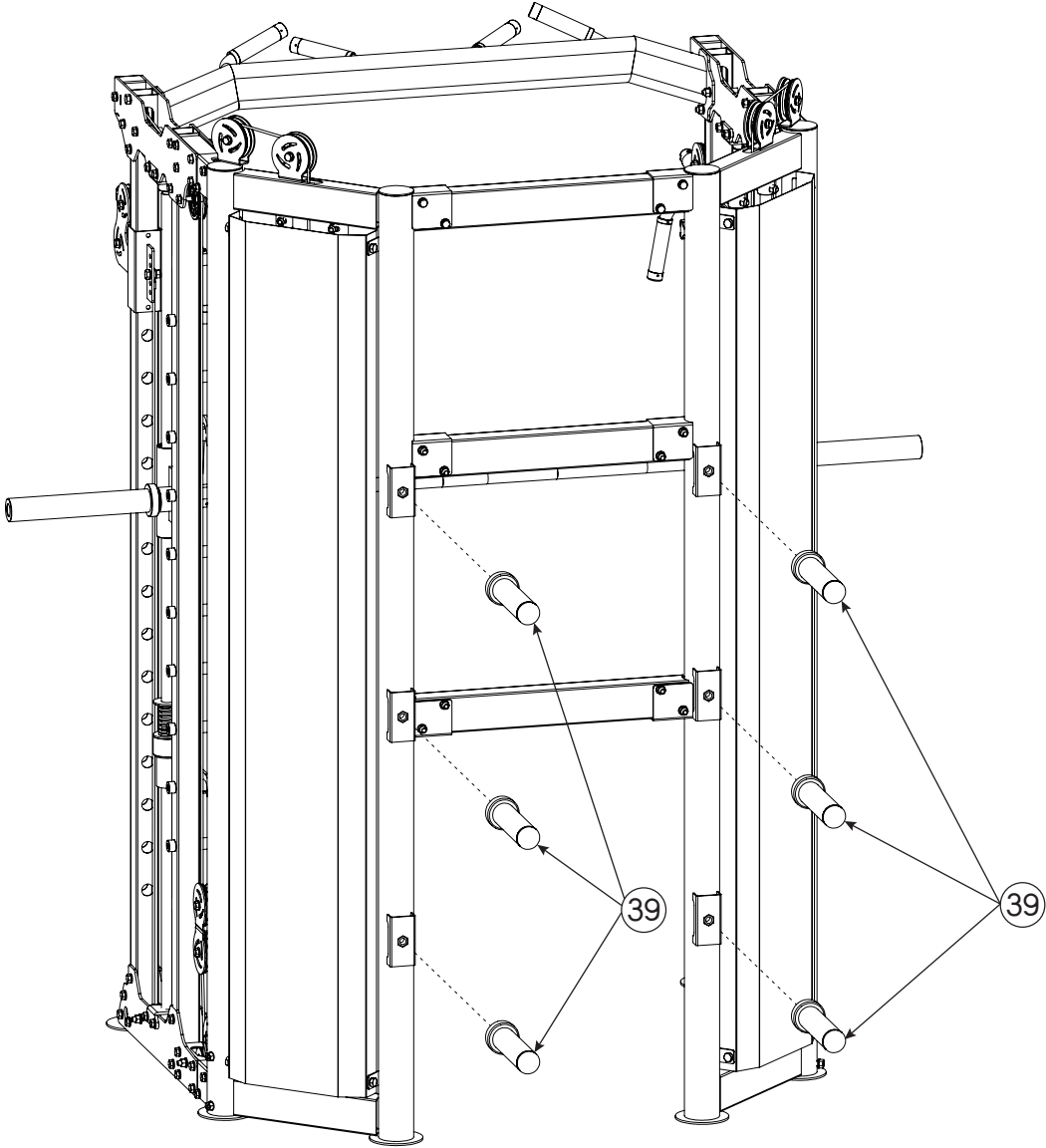
STEP 21 (Two People Are Required.)

NO.	DESCRIPTION	QUANTITY
h	M8x20 Hex Bolt	8
i	M8 Washer	16
j	M8 Nut	8



STEP 22 (Two People Are Required.)

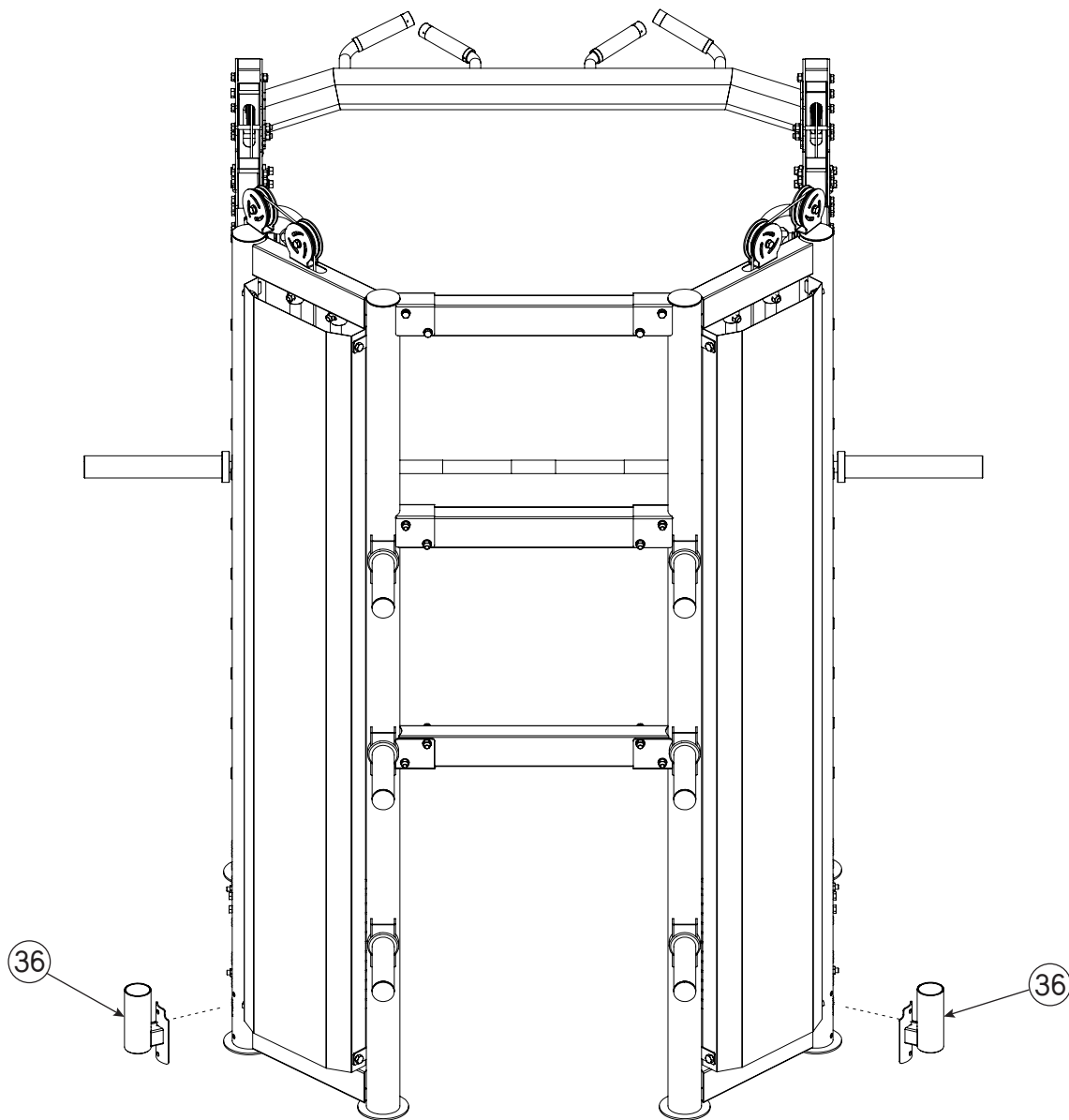
NO.	DESCRIPTION	QUANTITY
39	Plate Storage Tube	6



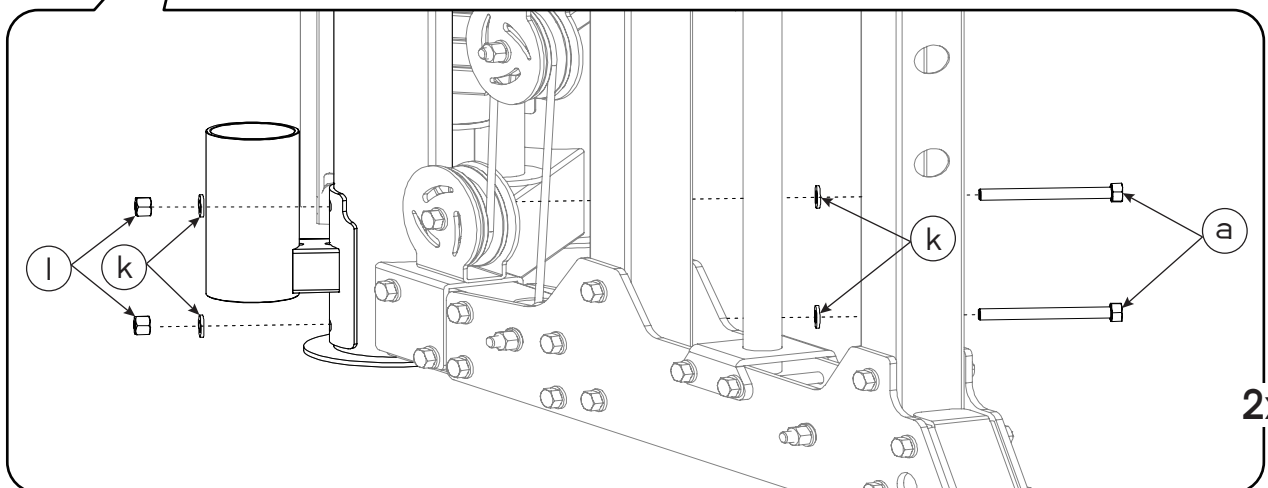
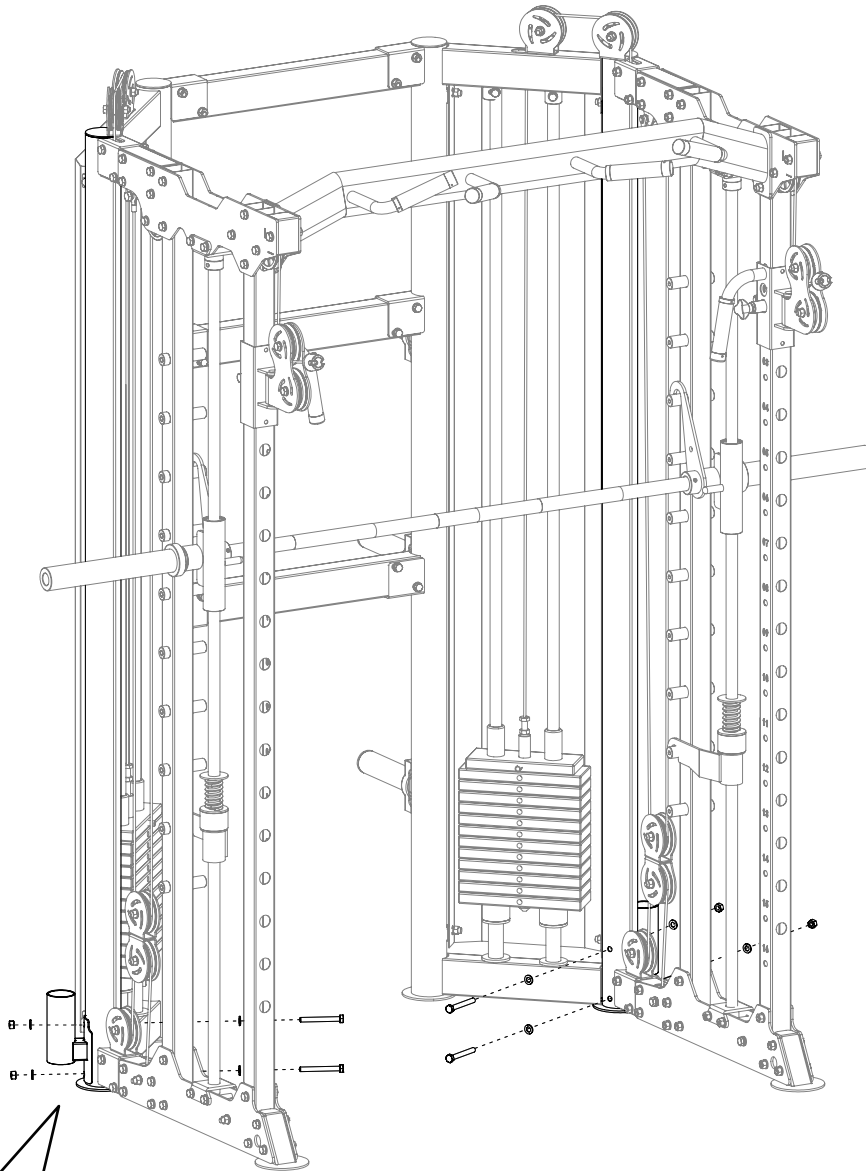
* NOTE: Don't tighten all the bolts until you finishing all the assembling steps of the main frame, otherwise the rack may be unbalanced or upwarp.

STEP 23-1(Two People Are Required.)

NO.	DESCRIPTION	QUANTITY
36	Barbell Storage	2
a	M10x90 Hex Bolt	4
k	M10 Washer	8
l	M10 Nut	4



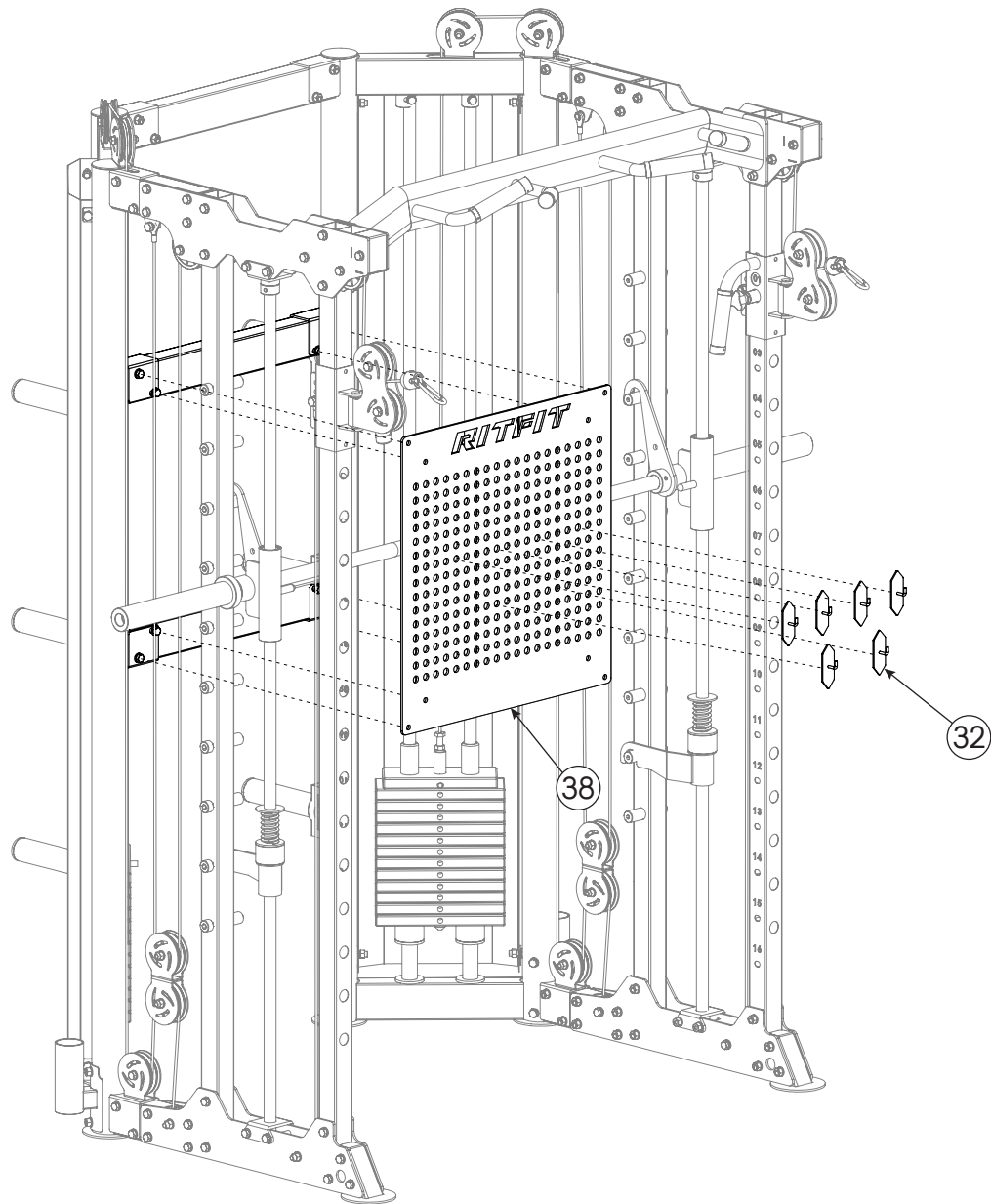
STEP 23-2 (Two People Are Required.)



* NOTE: Don't tighten all the bolts until you finishing all the assembling steps of the main frame, otherwise the rack may be unbalanced or upwarp.

STEP 24-1 (Two People Are Required.)

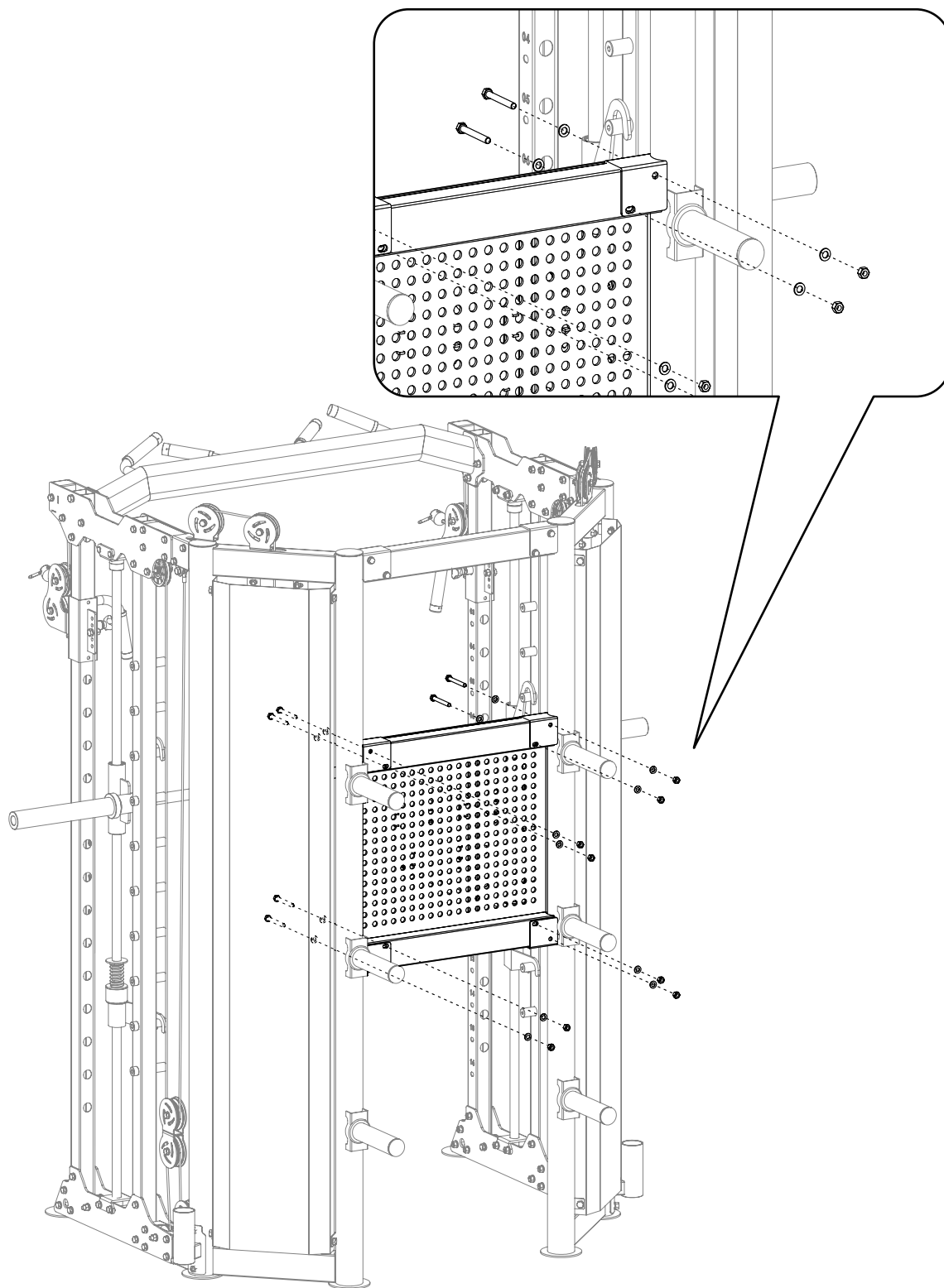
NO.	DESCRIPTION	QUANTITY
32	Storage Hook	6
38	Storage Board	1



* NOTE: Don't tighten all the bolts until you finishing all the assembling steps of the main frame, otherwise the rack may be unbalanced or upwarp.

STEP 24-2 (Two People Are Required.)

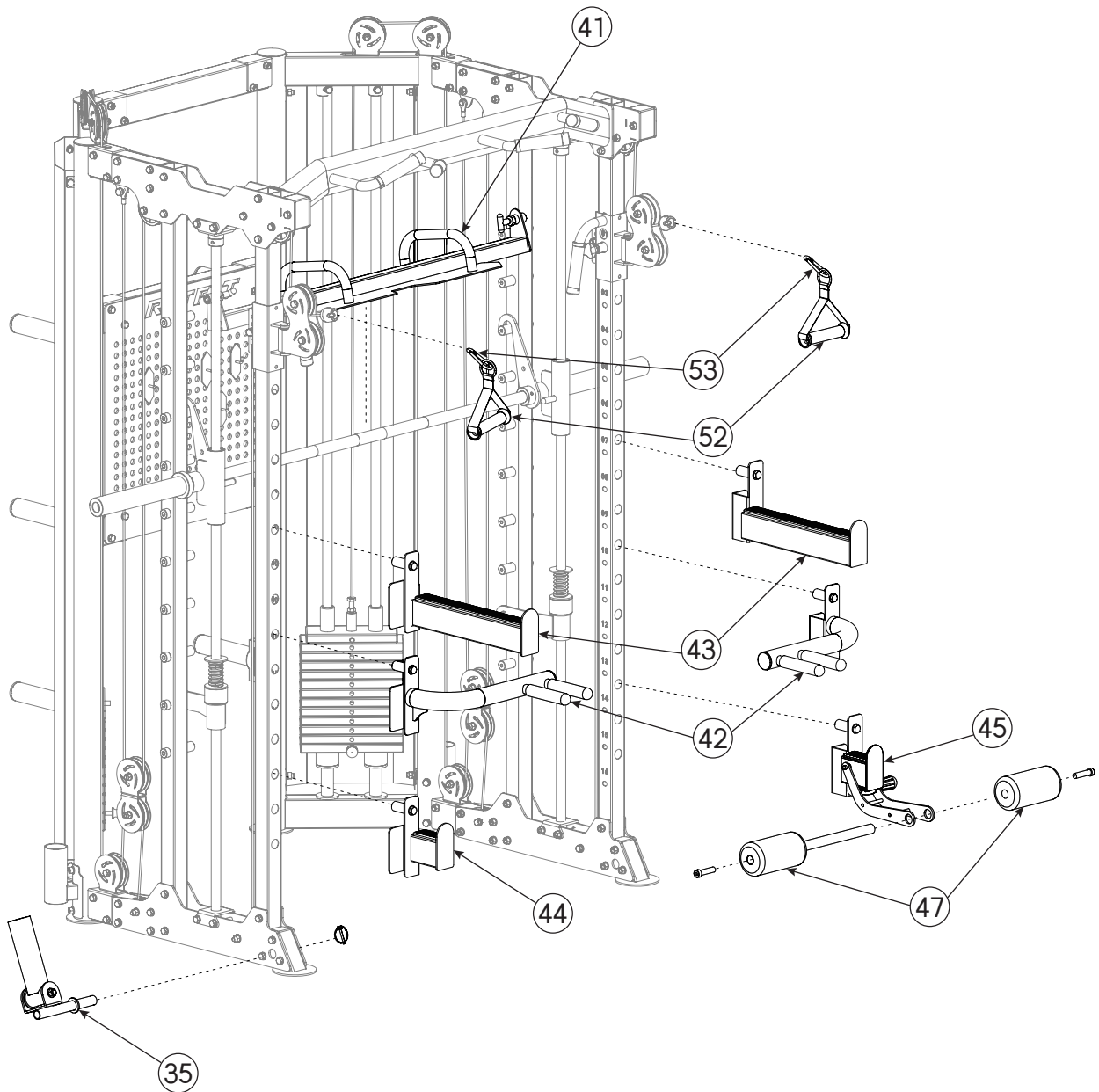
* Note: The nut has been installed on the Back Beam ③ in the Step 1, please loose it before installing the Storage Board ⑳.



* NOTE: Don't tighten all the bolts until you finishing all the assembling steps of the main frame, otherwise the rack may be unbalanced or upwarp.

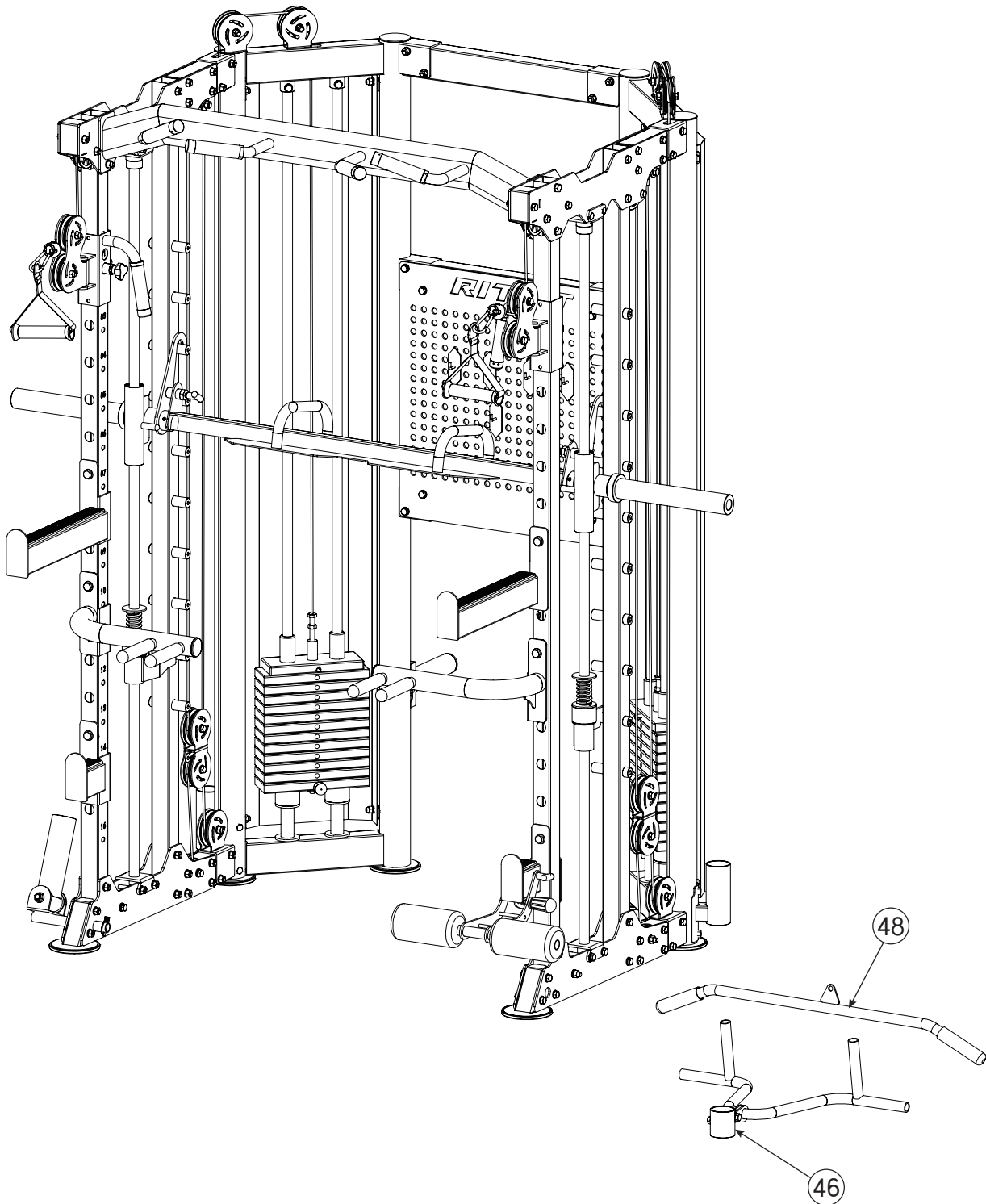
STEP 25 (Two People Are Required.)

NO.	DESCRIPTION	QUANTITY
35	Landmine Attachment	1
41	Leg Press Attachment	1
42	Dip Bars Set	1
43	Safety Bars Set	1
44	J-Hook (Left)	1
45	J-Hook (Right)	1
47	Foam Roller	1
52	Cable Handle	2
53	Carabiner	2



STEP 26 (Two People Are Required.)

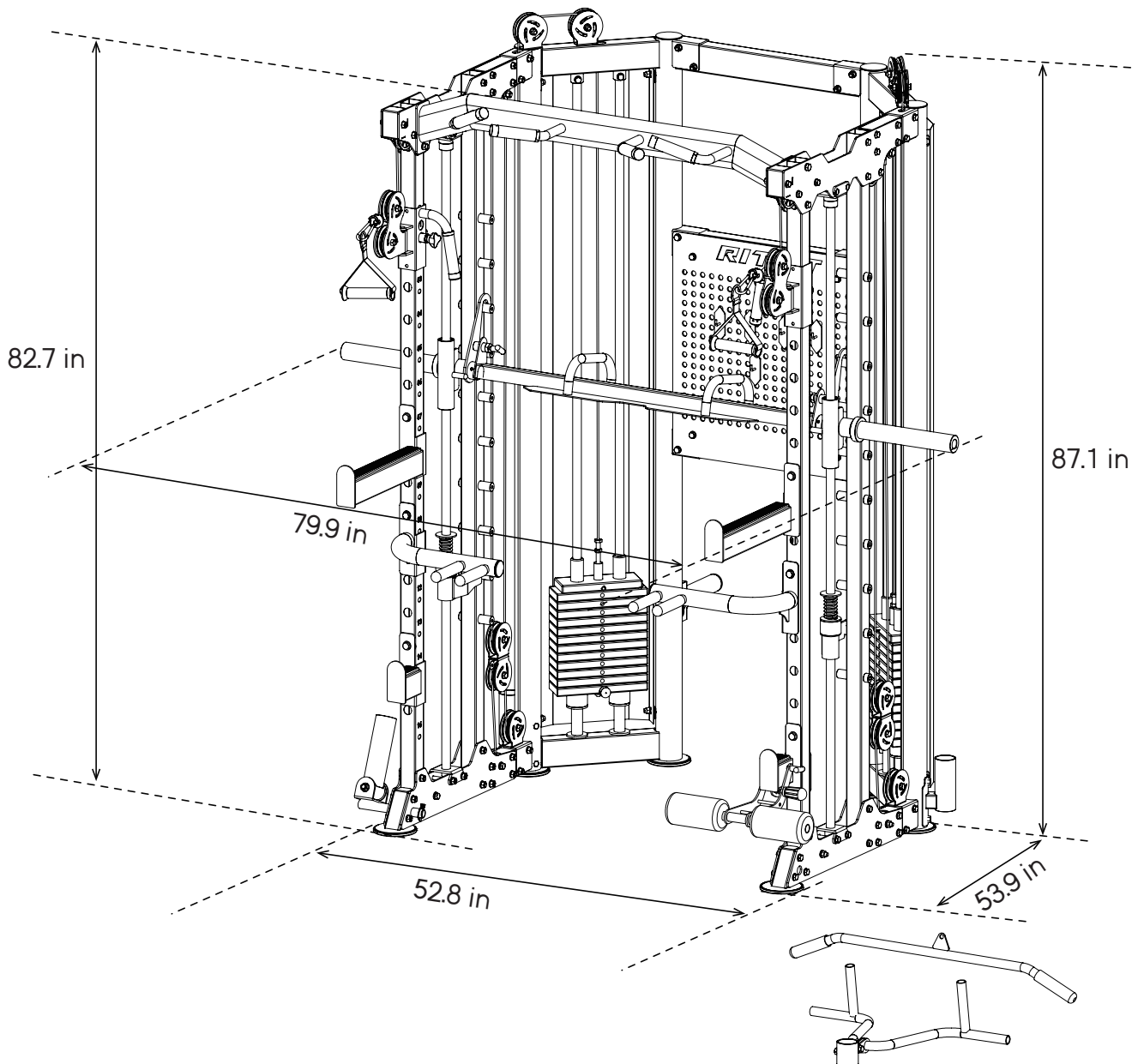
NO.	DESCRIPTION	QUANTITY
46	Multi-grip Row Handle Set	1
48	Lat Bar	1



* NOTE: Don't tighten all the bolts until you finishing all the assembling steps of the main frame, otherwise the rack may be unbalanced or upwarp.

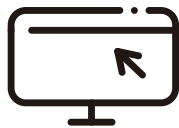
Congratulations!

You have assembled the Multifunctional Power Cage!
Now, you can officially start strength training with RITFIT.



Don't mind if you have extra fasteners after installation, which can be used as future replacement parts.

RITFIT



www.ritfitsports.com

SUBSCRIBE WEBSITE AND GET

- Free Exercise Ebook
- Lastest Updates



GOT A PROBLEM? GET IN TOUCH
support@ritfitsports.com

GET SOCIAL WITH US

 [@ritfit.sports](https://www.instagram.com/ritfit.sports)